

## Specific Inhibition of Elm1 Kinase Activity Reveals Functions Required for Early G<sub>1</sub> Events

Aparna Sreenivasan,<sup>1</sup> Anthony C. Bishop,<sup>2</sup> Kevan M. Shokat,<sup>2</sup> and Douglas R. Kellogg<sup>1\*</sup>

*Sinsheimer Laboratories, Department of Molecular, Cellular, and Developmental Biology, University of California, Santa Cruz, California 95064,<sup>1</sup> and Department of Cellular and Molecular Pharmacology, University of California, San Francisco, California 94143-0450<sup>2</sup>*

Received 10 March 2003/Returned for modification 16 April 2003/Accepted 10 June 2003

**In budding yeast, the Elm1 kinase is required for coordination of cell growth and cell division at G<sub>2</sub>/M. Elm1 is also required for efficient cytokinesis and for regulation of Swe1, the budding yeast homolog of the Wee1 kinase. To further characterize Elm1 function, we engineered an *ELM1* allele that can be rapidly and selectively inhibited in vivo. We found that inhibition of Elm1 kinase activity during G<sub>2</sub> results in a phenotype similar to the phenotype caused by deletion of the *ELM1* gene, as expected. However, inhibition of Elm1 kinase activity earlier in the cell cycle results in a prolonged G<sub>1</sub> delay. The G<sub>1</sub> requirement for Elm1 kinase activity occurs before bud emergence, polarization of the septins, and synthesis of G<sub>1</sub> cyclins. Inhibition of Elm1 kinase activity during early G<sub>1</sub> also causes defects in the organization of septins, and inhibition of Elm1 kinase activity in a strain lacking the redundant G<sub>1</sub> cyclins *CLN1* and *CLN2* is lethal. These results demonstrate that the Elm1 kinase plays an important role in G<sub>1</sub> events required for bud emergence and septin organization.**

Wee1-related kinases delay entry into mitosis by phosphorylating and inhibiting mitotic cyclin-dependent kinases (20, 38). In fission yeast, Wee1 is thought to play a critical role in coordination of cell growth and cell division by delaying entry into mitosis until a critical size has been reached (34, 35). Swe1, the budding yeast homolog of Wee1, is also required for coordination of cell growth and cell division at G<sub>2</sub>/M, indicating that the basic functions of fission yeast Wee1 have been conserved in budding yeast (24). As in fission yeast *wee1*<sup>-</sup> mutants, *swe1Δ* cells enter mitosis prematurely, leading to the birth of abnormally small daughter cells.

Recent work has identified an intricate signaling network that is required for regulation of Swe1 and for coordination of cell growth and cell division at G<sub>2</sub>/M (1, 2, 10, 18, 26, 29, 30, 39, 41, 43). This network includes the kinases Elm1, Gin4, Cla4, and Hsl1 as well as a number of proteins required for regulation of these kinases, including Nap1, Cdc42, Hsl7, and the septins. Inactivation of this signaling network can cause cells to undergo a prolonged G<sub>2</sub>/M delay while polarized cell growth continues, leading to the formation of highly elongated cells that are much larger than normal. Deletion of the *SWE1* gene eliminates the G<sub>2</sub>/M delay and the elongated cell phenotype caused by inactivation of the signaling network, suggesting that the network negatively regulates Swe1 activity to allow entry into mitosis (2, 29, 30, 41). The mechanisms by which the signaling network negatively regulates Swe1 at G<sub>2</sub>/M are poorly understood. Some studies have concluded that Swe1 is targeted for degradation at G<sub>2</sub>/M and that components of the signaling network regulate Swe1 stability (31, 32, 40). Other studies, however, have concluded that Swe1 is stable throughout G<sub>2</sub>/M and that the signaling network regulates the phosphorylation state of Swe1 (24, 41).

Several different kinds of experiments have shown that the Elm1 kinase plays an important role in mitotic events. For example, *elm1Δ* shows strong genetic interactions with the mitotic cyclins and Elm1 is required for proper localization of the septins, for efficient cytokinesis, and for activation of the Gin4 kinase during mitosis (8, 9, 41). *elm1Δ* cells undergo a prolonged G<sub>2</sub>/M delay at the short-spindle stage and become highly elongated. Deletion of the *SWE1* gene largely rescues the elongated cell phenotype and mitotic delay observed in *elm1Δ* cells (9, 18, 41). Furthermore, Elm1 is required for full hyperphosphorylation of Swe1 in vivo (41). Taken together, these observations suggest that Elm1 is a negative regulator of Swe1. However, *elm1Δ swe1Δ* cells still mislocalize the septins, are inviable at 37°C, and show severe defects in cytokinesis (9, 41). It therefore seems likely that Elm1 carries out functions in addition to the functions required for regulation of Swe1.

Much of our understanding of Elm1 and other proteins required for regulation of Swe1 has come from analysis of the phenotypes caused by gene deletions (1, 2, 10, 18, 26, 29, 30, 39, 41, 43). Although these studies have been informative, analysis of mutant phenotypes caused by gene deletions can be misleading. Cells carrying gene deletions must be grown for many generations before they can be studied, which can make it difficult to distinguish primary versus secondary effects. In addition, accumulation of suppressors and other forms of adaptation can mask phenotypes.

To circumvent the problems of gene deletions, we generated an analog-sensitive version of the Elm1 kinase that can be rapidly and selectively inhibited in vivo by the adenine analog 1 naphthol-methyl PP1 (1NM-PP1) (4, 7). We found that inhibition of Elm1 kinase activity during G<sub>2</sub> causes a phenotype similar to the *elm1Δ* phenotype. Surprisingly, however, inhibition of Elm1 kinase activity early in the cell cycle reveals that Elm1 has G<sub>1</sub> functions that were missed in studies with *elm1Δ* cells. Inhibition of Elm1 kinase activity in early G<sub>1</sub> causes prolonged delays in G<sub>1</sub> cyclin transcription, bud emergence,

\* Corresponding author. Mailing address: Sinsheimer Laboratories, Department of Molecular, Cellular, and Developmental Biology, University of California, Santa Cruz, CA 95064. Phone: (831) 459-5659. Fax: (831) 459-3139. E-mail: kellogg@darwin.ucsc.edu.

TABLE 1. Strains used in this study

Strain	Genotype	Reference
AS1	<i>MATa elm1Δ::TRP1 bar1Δ</i>	41
AS20	<i>MATa elm1Δ::URA3 bar1Δ</i>	This study
AS79	<i>MATa elm1-as bar1Δ</i>	This study
AS88	<i>MATa elm1-as CLN2-3XHA::LEU2 bar1Δ</i>	This study
DK186	<i>MATa bar1Δ</i>	1
AS105	<i>MATa cln1Δ::HIS3 cln2Δ::LEU2 elm1-as bar1Δ</i>	This study
AS96	<i>MATa cln1Δ::HIS3 cln2Δ::LEU2 bar1Δ</i>	This study
SA49	<i>MATa elm1-as pGAL-CLN2(CEN URA3)</i>	This study

and polarization of the septins. In addition, inhibition of Elm1 kinase activity is lethal in cells lacking the  $G_1$  cyclins Cln1 and Cln2. These observations show that Elm1 is a member of a growing group of proteins that are required for the normal timing of entry into mitosis and for viability in *cln1Δ cln2Δ* cells (3, 14, 48).

#### MATERIALS AND METHODS

**Strains and culture conditions.** Except where noted, all cells were grown in yeast extract-peptone-dextrose (YEPE) medium. All strains were in the W303 strain background (*leu2-3,112 ura3-52 can1-100 ade2-1 his3-11 trp1-1*). The pGAL-CLN2 plasmid in strain SA49 was a gift of Ray Deshaies. The additional features of these strains are listed in Table 1.

**Generation of analog-sensitive and catalytically inactive alleles of *ELM1*.** The *ELM1* gene was amplified from yeast genomic DNA (primers: GCGGGATCC TTCTTGAAGTAGCTATTAAG and GCGTCTAGACAATATTATTCGATG AAGTT) and cloned into the *Bam*H1 and *Xba*I sites of Ycplac111 to yield pDK96B. The analog-sensitive *ELM1* mutation was made by mutating pDK96B to change threonine 200 to a glycine (pAS18) (primers: CTGGATAGTCGGT AATTGGTGCA and TGCACCAATTACCGACTATCCAG). To integrate the *elm1-as* allele into the *ELM1* locus, PCR was used to amplify the *elm1-as* gene, using the same primers used in the initial amplification. Four 100- $\mu$ l PCR mixtures were pooled and transformed into AS20, an *elm1* deletion strain marked with *URA3*. To select for integration events that replaced the *URA3* gene with the *elm1-as* allele, the transformation was plated onto YEPE, allowed to grow at 30°C for 2 days, and then replica plated onto plates containing 5-fluoroorotic acid (5-FOA). Transformants that grew on 5-FOA and exhibited wild-type cell morphology were then tested for sensitivity to 1NM-PP1.

**Cell cycle arrests, Western blotting, Northern blotting, halo assays, antibodies, and treatment with 1NM-PP1.** Cell cycle arrests with  $\alpha$ -factor and Western blotting were carried out as previously described (26). For cell cycle time course experiments, cells were arrested for 3 h with 1  $\mu$ g of  $\alpha$ -factor/ml. Cells were released from the arrest by washing three times with YEPE medium, and 1NM-PP1 was added at the indicated times. The 1NM-PP1 was added from a 12 mM stock in dimethyl sulfoxide (DMSO), and control cells were mock treated with DMSO. The zero time point corresponds to the first wash with YEPE medium. Over 200 cells were scored for each time point when determining the percentages of cells that had undergone bud emergence or septin polarization. For Western blotting, samples were lysed in sodium dodecyl sulfate-polyacrylamide gel electrophoresis sample buffer containing 2 mM phenylmethylsulfonyl fluoride, 50 mM NaF, 65 mM Tris-HCl (pH 6.8), 3% sodium dodecyl sulfate, 5%  $\beta$ -mercaptoethanol, and 10% glycerol. Halo assays were carried out by pipetting 10  $\mu$ l of 1 mM 1NM-PP1 onto sterile Whatman 3MM filter disks on a lawn of cells plated onto YEPE plates. Northern blot experiments were carried out as previously described (26). The anti-Elm1 antibody was made by immunizing rabbits with a glutathione S-transferase-Elm1 fusion protein.

For one experiment (see Fig. 5), strain SA49 was grown overnight in synthetic medium lacking uracil and containing 2% glycerol–2% ethanol as a carbon source. Cells at an optical density of 0.5 were then washed in YEPE medium containing 2% glycerol–2% ethanol, and  $\alpha$ -factor was added to reach a concentration of 0.5  $\mu$ g/ml. After 3.5 h at room temperature, cells were washed three times with YEPE medium containing 2% glycerol–2% ethanol and 25  $\mu$ M 1NM-PP1 was added to half of the cells at 15 min after the first wash.

#### RESULTS

**Generation of an analog-sensitive *elm1* kinase.** To generate a version of the Elm1 kinase that can be specifically inhibited in vivo, we changed a threonine in subdomain V of the Elm1 kinase domain to glycine (Fig. 1A) (4, 7, 45). Cells carrying the engineered *ELM1* kinase displayed none of the morphological defects characteristic of a loss of *ELM1* function; however, the cells formed colonies at a slightly slower rate than wild-type cells, suggesting that the mutation has a slight effect on *ELM1* function. We refer to this analog-sensitive allele as *elm1-as*.

We treated log phase *elm1-as* cells with various concentrations of 1NM-PP1, a synthetic adenine-like molecule that specifically inhibits analog-sensitive kinases (5). As a control, we mock treated the *elm1-as* strain. We found that treatment of cells with 25  $\mu$ M 1NM-PP1 resulted in an elongated bud phenotype similar to the phenotype caused by *elm1Δ* (Fig. 1B). Treatment of wild-type cells with the same concentration of inhibitor had no effect (45). Treatment of *elm1-as* cells with lower concentrations of 1NM-PP1 also produced elongated buds; however, a longer period of time was required for observation of the elongated bud phenotype. Western blotting experiments showed that the Elm1 protein is stable after treatment of *elm1-as* cells with 1NM-PP1, demonstrating that the mutant phenotype is not due to loss of the Elm1 protein (data not shown). We also treated the *elm1-as* cells with two other PP1 analogs (2NM-PP1 and 1Na-PP1) and found that 1NM-PP1 is the most potent inhibitor of *elm1-as* kinase activity (6, 7).

We found that inhibition of *elm1-as* kinase activity caused a slightly different phenotype than deletion of the *ELM1* gene (Fig. 1B). Cells carrying a deletion of the *ELM1* gene were elongated and grew as large clumps of interconnected cells. *elm1-as* cells grown overnight in the presence of 1NM-PP1 were also elongated; however, the cells did not form large clumps. In addition, inhibition of *elm1-as* kinase activity resulted in the appearance of large rounded cells that were observed at a higher frequency than in *elm1Δ* cells. The different phenotypes caused by *elm1Δ* and inhibition of *elm1-as* kinase activity might reflect the existence of kinase-independent functions of Elm1 that are not affected by inhibition of *elm1-as* activity. Alternatively, *elm1-as* may retain a small amount of activity in the presence of 1NM-PP1. To help distinguish these possibilities, we generated a mutation in the catalytic domain of *ELM1* by changing the conserved lysine in subdomain II (lysine 117) to an alanine. In many other kinases, this mutation has been shown to produce a catalytically inactive kinase domain (23). We found that cells carrying *elm1<sup>K117A</sup>* have the same phenotype as *elm1Δ* cells, suggesting that the different phenotype caused by inhibition of *elm1-as* kinase activity may be due to residual kinase activity in the presence of 1NM-PP1 (data not shown).

Deletion of the *SWE1* gene largely eliminated the elongated cell phenotype caused by inhibition of *elm1-as* kinase activity, as previously reported for the elongated cell phenotype caused by *elm1Δ* (data not shown).

**Inhibition of *elm1-as* kinase activity causes a delay in bud emergence.** To more carefully characterize the phenotype caused by inhibition of *elm1-as* kinase activity, we arrested cells in  $G_1$  with the mating pheromone  $\alpha$ -factor and released them into fresh medium containing 1NM-PP1. We then took sam-

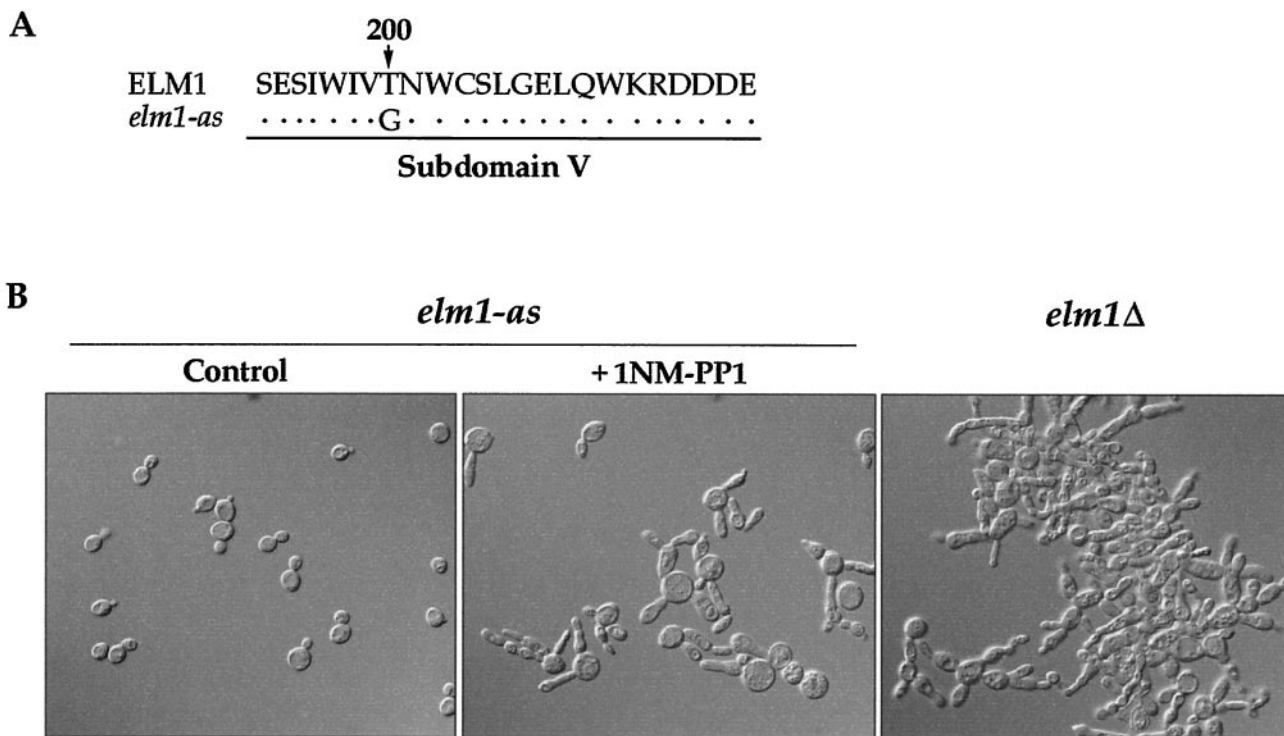


FIG. 1. The phenotype caused by inhibition of *elm1-as* activity. (A) Threonine 200 in subdomain V was changed to a glycine to generate the *elm1-as* mutant. (B) Log-phase *elm1-as* cells (strain AS79) growing at 30°C in YEPD medium were mock treated with DMSO (Control) or treated with 25  $\mu$ M 1NM-PP1 for 8 h. *elm1Δ* cells (strain AS1) are shown for comparison.

ples every 10 min and observed the effects of the presence of 1NM-PP1 upon bud emergence and bud growth. The results of this experiment were striking (Fig. 2A). With the mock-treated control, we found that 50% of the cells were budded by 60 min and nearly 100% of the cells were budded by 70 min. In contrast, the analog-treated cells exhibited a 40-min delay in bud emergence, with 50% of the budding occurring at 100 min and 100% of the budding occurring at 140 min. The delay in bud emergence caused by inhibition of Elm1 kinase activity was unexpected, since previous studies carried out using *elm1Δ* cells gave no evidence of a budding delay (8, 9, 41).

To determine when Elm1 kinase activity is required for bud emergence, we arrested the *elm1-as* strain in G<sub>1</sub> with  $\alpha$ -factor, released the cells from the arrest, and then added 25  $\mu$ M 1NM-PP1 at 10, 20, 30, 40, and 50 min after release from the arrest. We then determined the percentage of cells with buds at each time point (Fig. 2B). We found that addition of inhibitor up to 40 min after release from  $\alpha$ -factor resulted in a significant delay in bud emergence, demonstrating that Elm1 kinase activity is still required for normal timing of bud emergence at least 30 to 40 min after release from  $\alpha$ -factor.

**Elm1 kinase activity is required for proper organization of the septins during G<sub>1</sub>.** Previous work has shown that bud emergence is preceded by polarization of septin filaments to the site of bud emergence (36). To determine whether the delay in bud emergence is correlated with a delay in polarization of the septins, we treated *elm1-as* cells with 1NM-PP1 10 min after release from an  $\alpha$ -factor arrest and then used antibody staining to determine the percentage of cells with polarized septins at 10-min intervals (Fig. 3A). We observed a delay

in polarization of the septins that correlated with the delay in bud emergence, demonstrating that the requirement for Elm1 kinase activity occurs before polarization of the septins. When the septin ring eventually does appear in the inhibitor-treated cells, it is poorly focused and does not stain as intensely as the septin rings in the control cells, indicating that Elm1 kinase activity is required for the proper organization of the septins (Fig. 3B).

**Elm1 kinase activity is required before transcription of the G<sub>1</sub> cyclin Cln2.** Synthesis of the G<sub>1</sub> cyclins is a key event required for bud emergence (12, 22, 37). We therefore determined whether the G<sub>1</sub> cyclin Cln2 protein is synthesized with normal kinetics after treatment of *elm1-as* cells with 1NM-PP1. We made an *elm1-as* strain that had a 3XHA-tagged Cln2 and then assayed synthesis of the Cln2 protein after release from  $\alpha$ -factor arrest and treatment with 1NM-PP1 at 10 min (Fig. 4A). In the mock-treated cells, the synthesis of Cln2 directly correlated with bud emergence, first appearing at 45 min, peaking at 60 min, and then reappearing at 135 min as the cells entered a second cell cycle. In the analog-treated strain, however, we found that the Cln2 protein was not synthesized until 75 min, which correlated with the delay in bud emergence shown in Fig. 2. Cln2 protein levels remained fairly constant throughout the remainder of the time course, which may have been due to the fact that cells treated with 1NM-PP1 undergo bud emergence over a broad time range (Fig. 2B).

To determine whether the delay in the appearance of the Cln2 protein was due to a transcriptional delay, we performed Northern blot experiments to monitor Cln2 message levels. Again, we released cells from an  $\alpha$ -factor arrest and added

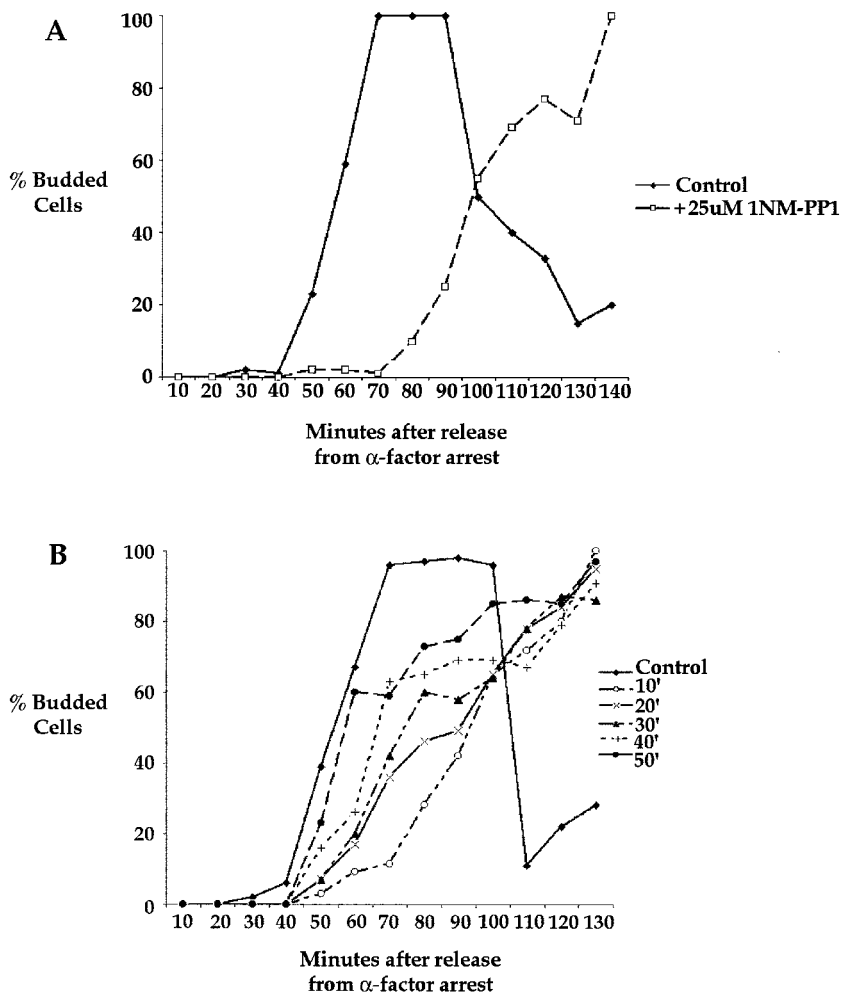


FIG. 2. Inhibition of *elm1-as* kinase activity causes a prolonged delay in bud emergence. (A) *elm1-as* cells (strain AS79) were released from an  $\alpha$ -factor arrest and treated with 25  $\mu$ M 1NM-PP1 or mock treated at 10 min after release from the arrest. Samples were taken every 10 min for 140 min, and the percentages of budded cells were calculated. (B) *elm1-as* cells (strain AS79) were released from an  $\alpha$ -factor arrest and treated with 25  $\mu$ M 1NM-PP1 at 10, 20, 30, 40, and 50 min after release from  $\alpha$ -factor arrest. Samples were taken every 10 min for 130 min, and the percentages of budded cells were determined.

1NM-PP1 at 10 min. We found that there was a delay in the synthesis of the Cln2 message that correlated with the delay in the synthesis of the Cln2 cyclin (Fig. 4B). These results show that the requirement for Elm1 kinase activity occurs before transcription of Cln2 during early  $G_1$ .

**Expression of the Cln2 from a conditional promoter does not rescue the bud emergence defect in *elm1-as* cells.** Since synthesis of Cln2 is thought to play a role in driving bud emergence, the delay in bud emergence observed in *elm1-as* cells may have been due to the delay in Cln2 synthesis (12, 22, 37). To test this possibility, we generated an *elm1-as* strain that expresses Cln2 from the GAL1 promoter. The *elm1-as GAL1-CLN2* cells were arrested with  $\alpha$ -factor in medium containing glycerol and ethanol as a carbon source to allow rapid induction of Cln2 expression upon the addition of galactose. The cells were then released from the arrest into medium containing galactose, and 1NM-PP1 was added to half of the culture at 15 min. Control cells initiated bud emergence at 45 min and then became elongated, as previously reported for cells expressing CLN2 from the GAL1 promoter (Fig. 5A) (27). In the

cells treated with 1NM-PP1, buds began to emerge approximately 15 min later. However, it was somewhat difficult to assay bud emergence, because the buds that formed had poorly defined bud necks and in some cases appeared to represent an elongation of the shmoo. Examples of buds in the control and the 1NM-PP1-treated cells at 105 min are shown in Fig. 5B. Thus, expression of Cln2 did not fully rescue the delay in bud emergence caused by inhibition of *elm1-as* kinase activity. Expression of Cln2 also failed to rescue the defect in septin organization caused by inhibition of *elm1-as* kinase activity (data not shown).

**Inhibition of Elm1 kinase activity after bud emergence results in a prolonged mitotic delay.** To determine whether inhibition of Elm1 kinase activity later in the cell cycle results in mitotic defects, we added 1NM-PP1 to the *elm1-as* strain 70 min after release from the  $\alpha$ -factor block and then determined the percentage of cells with buds as a function of time. This experiment was performed for a longer period of time to allow growth of elongated buds, and we added  $\alpha$ -factor to the culture at 70 min to prevent a second round of bud emergence if the

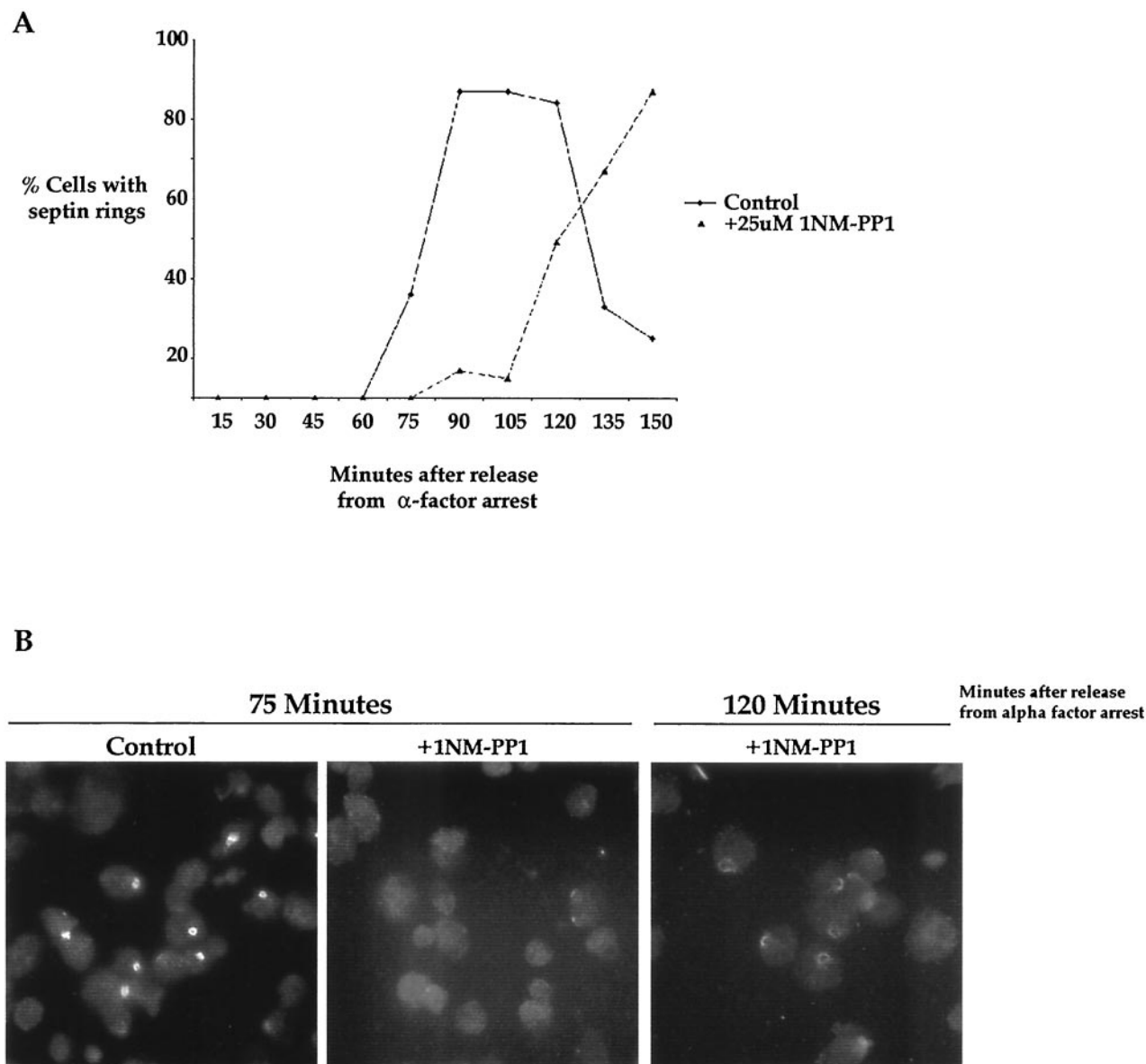


FIG. 3. Inhibition of Elm1 kinase activity causes a delay in septin localization and aberrant septin organization. (A) *elm1-as* cells were released from an  $\alpha$ -factor arrest and treated with 25  $\mu$ M 1NM-PP1 or mock treated at 10 min after release from the arrest. Samples were taken every 15 min, and the percentages of cells with polarized septin staining were determined after staining with an anti-Cdc11 polyclonal antibody. (B) *elm1-as* cells were released from an  $\alpha$ -factor arrest and treated with 1NM-PP1 as described for Fig. 3A. Examples of the septin staining observed at the indicated times are shown.

cells exited mitosis. We found that when 1NM-PP1 was added at 70 min, more than 90% of the cells remained arrested with buds at 240 min, suggesting that addition of 1NM-PP1 after bud emergence results in a prolonged mitotic delay (Fig. 6A). At the end of the time course, 37% of the cells had elongated buds. The fact that only 37% of the cells had elongated buds suggests that cells need to go through multiple cell cycles before all of the cells have elongated buds, as observed for cells grown overnight in the presence of 1NM-PP1 (Fig. 1B).

As a further means of assaying mitotic progression, we determined the kinetics of the appearance of the Clb2 mitotic cyclin after treatment of *elm1-as* cells with 1NM-PP1. We released *elm1-as* cells from an  $\alpha$ -factor arrest and added 1NM-

PP1 at 10 min or 70 min after the release. Again, we added  $\alpha$ -factor back to the culture at 70 min to ensure that the cells did not enter a second cell cycle. We took samples every 20 min and assayed Clb2 protein levels by Western blotting (Fig. 6B). In the mock-treated control, the Clb2 protein exhibited wild-type kinetics, with protein levels rising at 75 min, peaking at 90 min, and decreasing at 120 min. However, when treated with 1NM-PP1 10 min after release from  $\alpha$ -factor arrest, the appearance of the Clb2 protein was delayed and Clb2 protein levels remained high throughout the remainder of the time course. When 1NM-PP1 was added 70 min after release from  $\alpha$ -factor arrest, the Clb2 protein appeared with normal kinetics and remained at high levels throughout the remainder of the

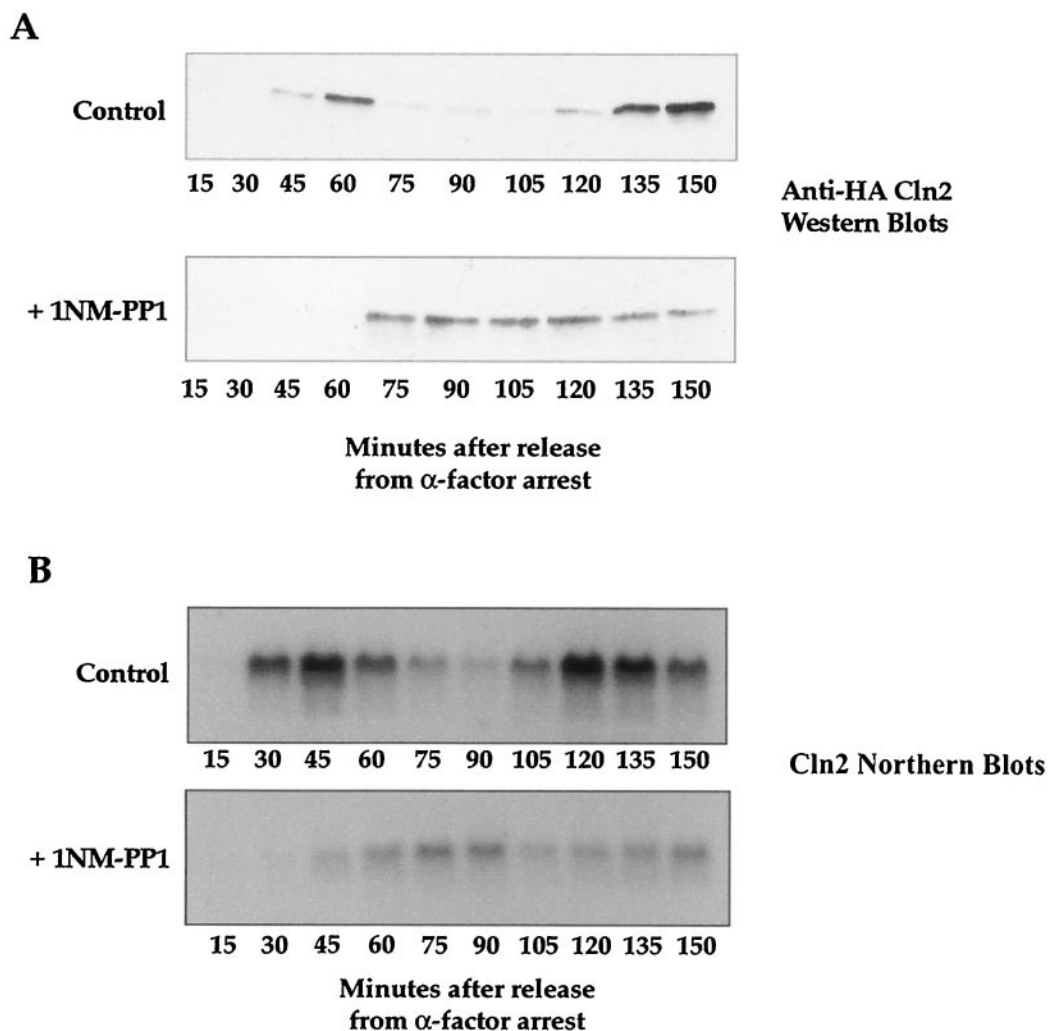


FIG. 4. The requirement for Elm1 kinase activity occurs before transcription of the  $G_1$  cyclin *CLN2*. (A) Western blots showing the behavior of a Cln2-3XHA fusion protein in 1NM-PP1-treated and mock-treated *elm1-as* cells (strain AS88) as a function of time after release from an  $\alpha$ -factor arrest. 1NM-PP1 was added at 10 min after release from the arrest. (B) Cln2 Northern blots from an experiment identical to the one whose results are shown in panel A.

time course. These results suggest that inhibition of Elm1 kinase activity after bud emergence results in a prolonged mitotic delay with high Clb2 levels.

To determine at what stage of mitosis the *elm1-as* cells arrest, we added 1NM-PP1 to the cells at 70 min and then took samples every 15 min and stained cells with anti-tubulin antibodies. We found that the inhibition of *elm1-as* kinase activity after bud emergence causes cells to undergo a prolonged delay at the short-spindle stage of mitosis (Fig. 6C). Previous work has shown that *elm1* $\Delta$  cells also undergo a prolonged delay at the short-spindle stage (41).

**Loss of Elm1 function in *cln1* $\Delta$  *cln2* $\Delta$  cells is lethal.** Budding yeast cells carry three  $G_1$  cyclins called *CLN1*, *CLN2*, and *CLN3*. Cells from which any two of these cyclin genes have been deleted are viable, whereas deletion of all three is lethal, indicating that the  $G_1$  cyclins are functionally redundant (11, 47). Previous work found that loss of function of Cla4, Gin4, Nap1, or the septins is lethal in a *cln1* $\Delta$  *cln2* $\Delta$  background, suggesting that these proteins have a role in  $G_1$  events (3, 14,

48). Since Elm1 is required for  $G_1$  events and Elm1, Cla4, Gin4, Nap1, and the septins all appear to function in the same signaling network, we wanted to determine whether *ELM1* shows genetic interactions with *CLN1* and *CLN2*. We crossed an *elm1* $\Delta$  strain with a *cln1* $\Delta$  *cln2* $\Delta$  strain, but we were unable to recover a viable spore containing the triple *elm1* $\Delta$  *cln1* $\Delta$  *cln2* $\Delta$  deletion, suggesting that *elm1* $\Delta$  is synthetically lethal with *cln1* $\Delta$  *cln2* $\Delta$ . To further investigate synthetic lethality with the  $G_1$  cyclins, we generated a strain harboring the *elm1-as* allele in a *cln1* $\Delta$  *cln2* $\Delta$  background. We then performed 1NM-PP1 halo assays with wild-type, *elm1-as*, *cln1* $\Delta$  *cln2* $\Delta$ , and *elm1-as* *cln1* $\Delta$  *cln2* $\Delta$  strains. We found that 1NM-PP1 blocked the growth of the *elm1-as* *cln1* $\Delta$  *cln2* $\Delta$  strain but not that of the other strains, demonstrating that inhibition of Elm1 kinase activity in *cln1* $\Delta$  *cln2* $\Delta$  cells is lethal (Fig. 7A).

We next determined whether the *elm1-as* *cln1* $\Delta$  *cln2* $\Delta$  cells arrest at a specific point in the cell cycle when Elm1 kinase activity is inhibited. We synchronized the *elm1-as* *cln1* $\Delta$  *cln2* $\Delta$  strain in  $G_0$  by nutrient arrest. We then plated the nutrient-

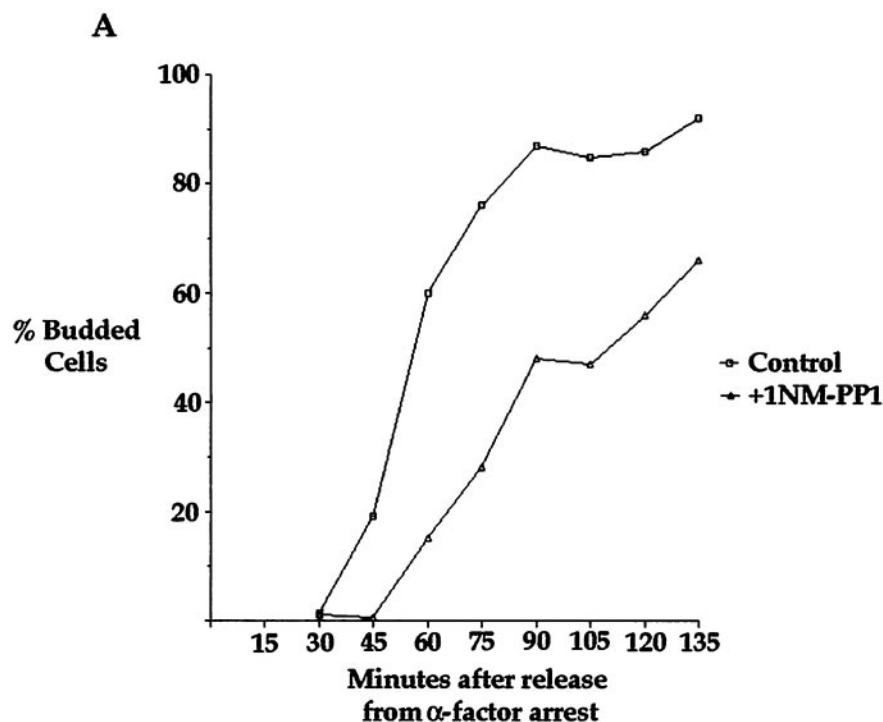
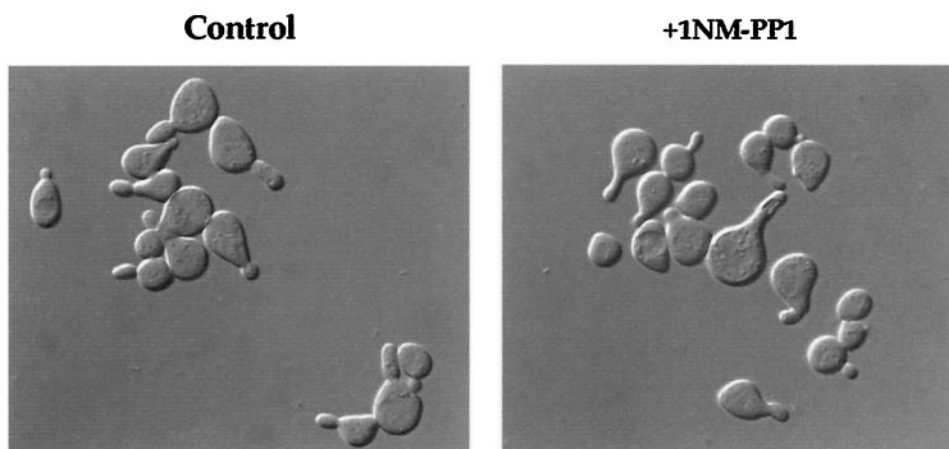
**B**

FIG. 5. Expression of *CLN2* from the *GAL1* promoter does not rescue the defect in bud emergence caused by inhibition of *elm1-as* kinase activity. (A) *elm1-as* cells (strain SA49) that express *CLN2* from the *GAL1* promoter were released from an  $\alpha$ -factor arrest and treated with 25  $\mu$ M 1NM-PP1 or mock treated with DMSO 15 min after release from the arrest. The percentages of cells undergoing bud emergence were then determined at 15-min intervals and plotted as a function of time. (B) Examples of cells at the 105-min time point in panel A.

arrested cells onto a YEPD plate containing 40  $\mu$ M 1NM-PP1 or onto a control plate. Using a micromanipulator needle, we picked 40 individual cells per plate and observed their growth every 3 h for 12 h and then at 24 and 48 h. By 6 h all of the control cells had divided once, and by 24 h a small colony was produced. In contrast, only 21 of 40 of the *elm1-as cln1 $\Delta$  cln2 $\Delta$*  cells underwent bud emergence by 9 h, indicating a long delay in bud emergence. The buds that emerged became highly elongated and had multiple constrictions along their length (Fig.

6B). By 24 h 30 of 40 of the cells had either 1 or 2 highly elongated buds and by 48 h all of the cells on the 1NM-PP1 plate had an elongated bud phenotype, and manipulation of the cells with a microneedle suggested that none of the cells had undergone cytokinesis.

To determine whether the *elm1-as cln1 $\Delta$  cln2 $\Delta$*  cells are able to exit  $G_1$  and enter mitosis when Elm1 kinase activity is inhibited, we released the *elm1-as cln1 $\Delta$  cln2 $\Delta$*  cells from a nutrient arrest, placed them into liquid medium containing 25

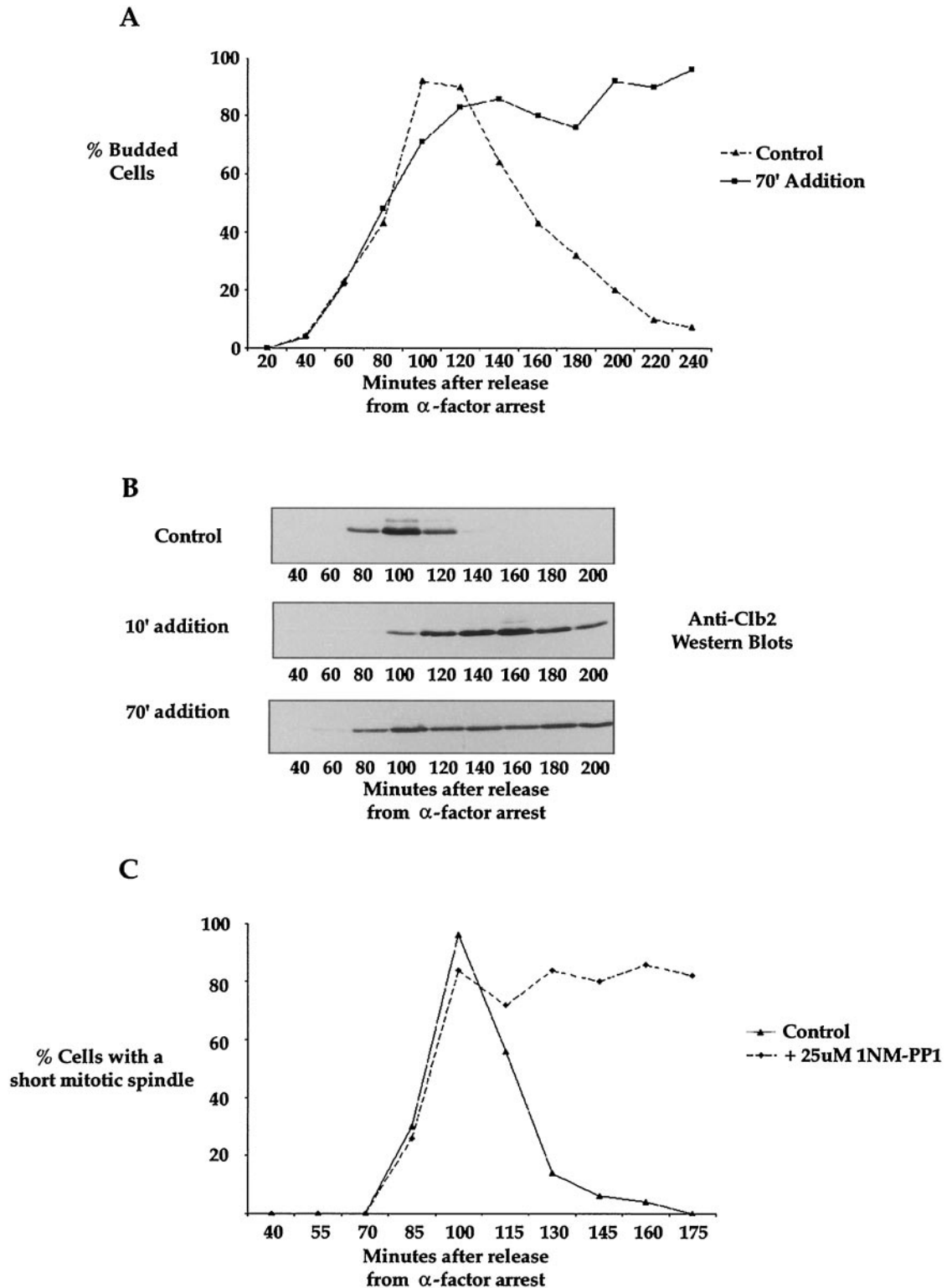


FIG. 6. Inhibition of Elm1 kinase activity late in the cell cycle causes a mitotic arrest with high Clb2 levels and a short spindle. (A) *elm1-as* cells (strain AS79) were released from  $\alpha$ -factor arrest and treated with 1NM-PP1 70 min after release. Samples were taken every 15 min, and the percentage of budded cells was determined at each time point. (B) *elm1-as* cells (strain AS79) were released from  $\alpha$ -factor arrest and treated with 1NM-PP1 at 10 or 70 min after release. Samples were taken every 20 min, and Western blotting was used to assay levels of the Clb2 mitotic cyclin. (C) *elm1-as* cells (strain AS79) were released from  $\alpha$ -factor arrest and treated with 1NM-PP1 70 min after release. Samples were taken every 15 min, and the percentage of cells with a short mitotic spindle was determined at each time point.

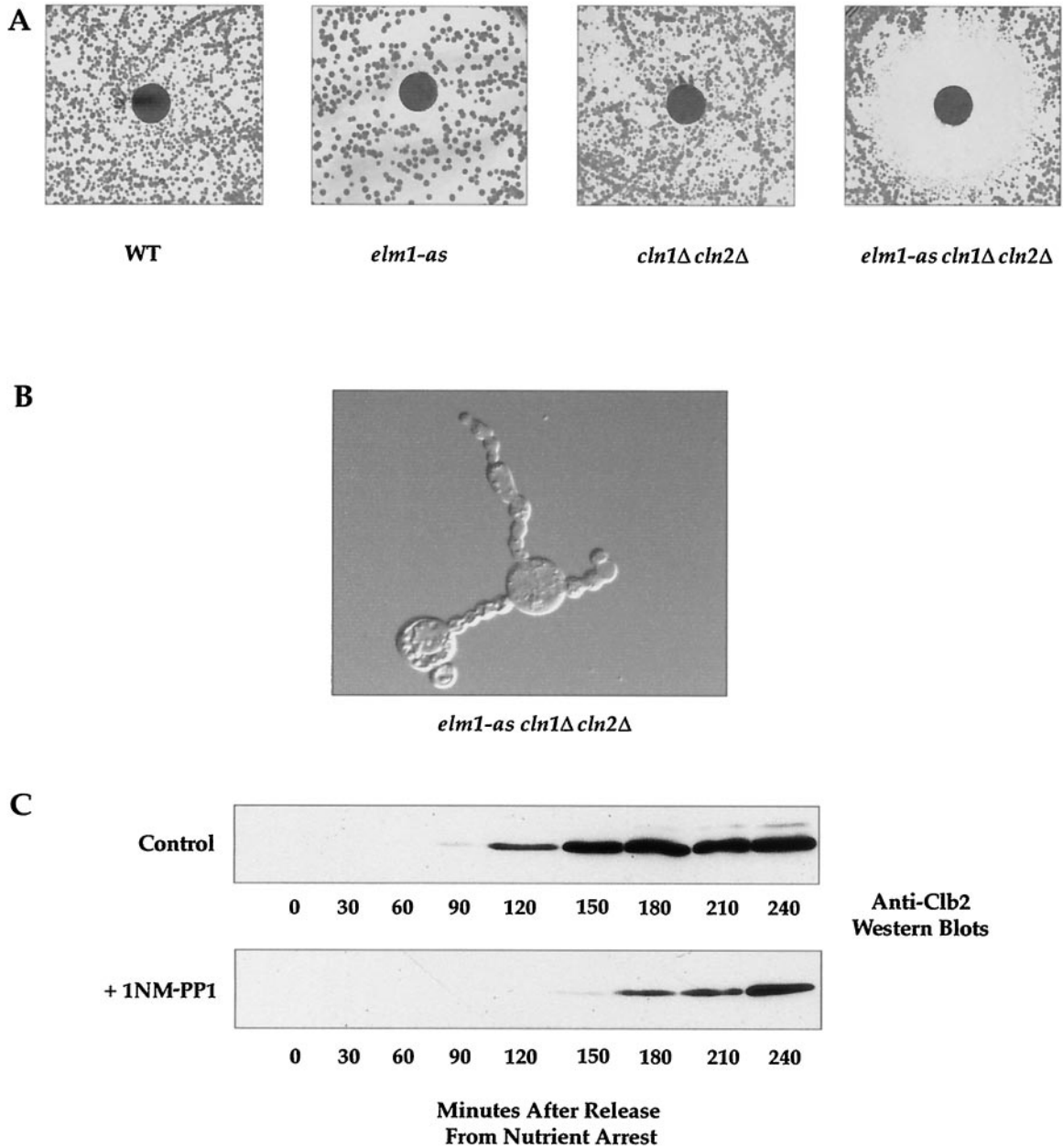


FIG. 7. Inhibition of Elm1 kinase activity in *elm1-asΔ cln1Δ cln2Δ* cells is lethal. (A) The indicated strains were grown to saturation, plated onto YEPD, and analyzed for sensitivity to 1NM-PP1 by a halo assay (strains DK186, AS79, AS96, and AS105). WT, wild type. (B) The *elm1-as cln1Δ cln2Δ* strain (AS105) was nutrient arrested and released onto a YEPD plate containing 40  $\mu$ M 1NM-PP1 for 24 h. Cells were removed from the plate with a toothpick and photographed with Nomarski optics. (C) Western blots showing the behavior of the Clb2 protein in *elm1-as cln1Δ cln2Δ* cells (strain AS105) as a function of time after release from nutrient arrest in the presence of 25  $\mu$ M 1NM-PP1.

$\mu$ M 1NM-PP1, and then took samples every 30 min and used Western blotting to probe for the presence of the Clb2 mitotic cyclin. We found that consistent with a prolonged delay in G<sub>1</sub>, synthesis of the Clb2 protein was delayed relative to that of a mock-treated control (Fig. 6C). The fact that the Clb2 cyclin was synthesized suggests, however, that the cells were able to proceed into mitosis. To further define the arrest point of the *elm1-as cln1Δ cln2Δ* cells, we determined whether the cells were able to undergo nuclear division after inhibition of *elm1-as* kinase activity. We released the *elm1-as cln1Δ cln2Δ* cells

from a nutrient arrest in liquid culture, added 1NM-PP1, and took samples every hour for 6 h. Nuclear division was observed in the mock-treated control by 3 h; however, the cells treated with 1NM-PP1 became arrested with a single nucleus located at the bud neck up to 6 h after release from the nutrient arrest. We attempted to perform tubulin staining to further assess where the *elm1-as cln1Δ cln2Δ* cells arrest but found that they exhibited highly aberrant microtubule organization with numerous elongated microtubules, and it was therefore not possible to use spindle staining as a cell cycle marker.

## DISCUSSION

**Elm1 is required for G<sub>1</sub> events.** A number of observations have suggested that Elm1 carries out functions during G<sub>2</sub> and mitosis. *elm1Δ* cells undergo a prolonged delay at the short-spindle stage of mitosis (41). The delay is eliminated in *swe1Δ* cells and Elm1 is required for the full hyperphosphorylation of Swe1 during mitosis, consistent with the idea that Elm1 is required for regulation of Swe1 (18, 41). Elm1 is also required for hyperphosphorylation of Gin4 during mitosis, and *elm1Δ* shows strong genetic interactions with the mitotic cyclins (41). Finally, *elm1Δ* cells show defects in cytokinesis that are strongly enhanced by *swe1Δ* (9, 41).

In this study, however, we used specific inhibition of *elm1-as* kinase activity to show that Elm1 is also required for G<sub>1</sub> events. Inhibition of *elm1-as* kinase activity early in G<sub>1</sub> causes prolonged delays in bud emergence, septin polarization, and Cln2 synthesis. Furthermore, *elm1Δ* causes synthetic lethality in *cln1Δ cln2Δ* cells and inhibition of Elm1 kinase activity in *cln1Δ cln2Δ* cells is lethal. Specific inhibition of Elm1 kinase activity later in the cell cycle reveals a requirement for Elm1 during G<sub>2</sub>/M, consistent with the phenotype of *elm1Δ* cells (8, 9, 41).

In previous work we found that *elm1Δ* cells do not appear to undergo a delay in G<sub>1</sub>, since the Clb2 cyclin appears with normal timing after release from an  $\alpha$ -factor arrest, and the majority of *elm1Δ* cells have a G<sub>2</sub> DNA content (41). G<sub>1</sub> progression in *elm1Δ* cells cannot be determined by the timing of bud emergence due to the highly aberrant morphology of these cells. The apparent lack of a G<sub>1</sub> delay in *elm1Δ* cells may be due to the accumulation of suppressors in *elm1Δ* cells that have been grown for many generations. Another possibility is that regulatory mechanisms eliminate the G<sub>1</sub> delay once cells have developed the highly aberrant morphology characteristic of *elm1Δ* cells. For example, one might imagine that the G<sub>1</sub> delay caused by inhibition of *elm1-as* kinase activity is due to a defect in cell growth and that the delay is no longer observed once cells have become highly elongated and have undergone defective cytokinesis due to loss of the mitotic functions of Elm1.

**Elm1 kinase activity is required for septin organization during G<sub>1</sub>.** Inhibition of *elm1-as* kinase activity causes delayed localization of the septins to the site of bud emergence and a failure to form a tight septin ring. The fact that septins localize to the site of bud emergence during G<sub>1</sub> is somewhat puzzling, because there are no reports that the septins play a role in bud emergence and analysis of temperature-sensitive septin mutants has suggested that the septins execute their functions later in the cell cycle (19, 21, 28). It therefore seems unlikely that the delay in bud emergence is due to a delay in localization of the septins. It seems more likely that both bud emergence and septin organization during G<sub>1</sub> are dependent upon signals from the Elm1 kinase.

**Possible functions of Elm1 during G<sub>1</sub> and G<sub>2</sub>/M.** Inhibition of *elm1-as* kinase activity causes a delay in *CLN2* transcription and is lethal in *cln1Δ cln2Δ* cells. Transcription of *CLN2* in wild-type cells is thought to be triggered by *CLN3*, although the mechanisms by which it does so are poorly understood (13, 17, 42, 44). In the absence of *CLN3*, transcription of *CLN1* and *CLN2* is delayed but is eventually triggered by an alternative pathway that appears to work through Bck2 (16, 46). *CLN3* is essential for viability in *cln1Δ cln2Δ* cells (11). Taken together,

these observations are consistent with a model in which Elm1 is required for Cln3 function. In this model, Elm1 might be involved either in activating Cln3/Cdc28 complexes or in a pathway that mediates the functions of activated Cln3/Cdc28 complexes.

Elm1 is a member of an intriguing group of proteins that are required both for Swe1 regulation and for viability in *cln1Δ cln2Δ* cells. Other members of this group include Cla4, Gin4, Bud2, Nap1, and a member of the septin family called Cdc12 (Gin4 is allelic to the Cla6 gene identified in reference 14) (3, 15, 48). The requirement for Elm1, Cla4, Gin4, Nap1, and Cdc12 in *cln1Δ cln2Δ* cells is poorly understood. The genetic interactions with G<sub>1</sub> cyclins suggest that these proteins carry out G<sub>1</sub> functions, yet a number of observations suggest that they carry out functions during G<sub>2</sub>/M. Gin4, for example, undergoes hyperphosphorylation and activation during mitosis, which leads to assembly of a complex that includes Gin4, Nap1, and the septins (1, 33). Within the complex, Gin4 appears to directly phosphorylate the Shs1 septin during mitosis. Furthermore, Nap1 binds to the Clb2 mitotic cyclin and Nap1, Elm1, and Cla4 are required for hyperphosphorylation of Gin4 during mitosis (1, 25, 43). Finally, Elm1, Cla4, Gin4, Nap1, and a member of the septin family show strong genetic interactions with the mitotic cyclins: the phenotype caused by deletion of any of these genes is strongly enhanced in *clb1Δ clb3Δ clb4Δ* cells, which are dependent upon the *CLB2* cyclin for survival (1, 10, 26, 41, 43). In the case of *ELM1* and *CLA4*, loss of function of these genes in *clb1Δ clb3Δ clb4Δ* cells is nearly lethal.

It has been unclear whether these proteins carry out separable functions at multiple times during the cell cycle or whether they carry out a single function during G<sub>1</sub> that is required later in the cell cycle. For example, it is possible that proteins like Elm1 function only once during G<sub>1</sub> for completion of an event that is required later in the cell cycle. If successful completion of this event were monitored by Swe1, then failure to complete the event would lead to a Swe1-dependent G<sub>2</sub>/M delay. In this study, however, the ability to rapidly and specifically inhibit Elm1 kinase activity at different times during the cell cycle allowed us to show that Elm1 is likely to be required early in G<sub>1</sub> and again at G<sub>2</sub>/M. Since loss of function of *CLA4*, *GIN4*, and the septins causes phenotypes similar to those of *elm1Δ*, these proteins may also be required at multiple times during the cell cycle. Recent work has shown that inhibition of an analog-sensitive *cla4* allele causes a delay in bud emergence in *swe1Δ* cells, consistent with the idea that Cla4 also carried out G<sub>1</sub> functions (45).

There are a number of models that might account for the functions of Elm1, Nap1, Cla4, Gin4, and the septins. The fact that Elm1 is required for timely bud emergence and that Elm1, Cla4, Gin4, Nap1, and the septins are required for regulation of Swe1 and for timely entry into mitosis suggests the interesting possibility that these proteins are part of a signaling network that decides when passage through key cell cycle stages is to be triggered. For example, proteins like Elm1 might assess external conditions such as nutrient availability, or internal conditions such as cell size, and then send a signal to trigger passage through the cell cycle when conditions are appropriate. At G<sub>2</sub>/M, these proteins appear to inactivate Swe1 to trigger entry into mitosis, but their targets during G<sub>1</sub> are unknown. An alternative possibility is that the proteins control

events such as septin organization or cell growth that are required both for entry into mitosis and for bud emergence. These two possibilities are not mutually exclusive. For example, it is possible that there are proteins that both control cell growth and monitor cell size or nutrient availability.

The discovery that Elm1 plays a role in  $G_1$  events is of particular interest, because the signaling pathways that control  $G_1$  events are poorly understood in all eukaryotic cells. A better understanding of the molecular functions of the Elm1 kinase during  $G_1$  and  $G_2/M$  will require identification of proteins that associate with Elm1 as well as targets of Elm1 kinase activity.

#### ACKNOWLEDGMENTS

We thank Eric Weiss, David Drubin, Jeff Ubersax, and David Morgan for helpful advice and/or sharing unpublished results. We also thank Stephanie Anastasia for help with experiments.

This work was supported by the Pew Biomedical Scholars program and by a grant from the National Institutes of Health.

#### REFERENCES

- Altman, R., and D. R. Kellogg. 1997. Control of mitotic events by Nap1 and the Gin4 kinase. *J. Cell Biol.* **138**:119–130.
- Barral, Y., M. Parra, S. Bidlingmaier, and M. Snyder. 1999. Nim1-related kinases coordinate cell cycle progression with the organization of the peripheral cytoskeleton in yeast. *Genes Dev.* **13**:176–187.
- Benton, B. K., A. H. Tinkelenberg, D. Jean, S. D. Plump, and F. R. Cross. 1993. Genetic analysis of Cln/Cdc28 regulation of cell morphogenesis in budding yeast. *EMBO J.* **12**:5267–5275.
- Bishop, A., O. Buzko, S. Heyeck-Dumas, I. Jung, B. Kraybill, Y. Liu, K. Shah, S. Ulrich, L. Witucki, F. Yang, C. Zhang, and K. M. Shokat. 2000. Unnatural ligands for engineered proteins: new tools for chemical genetics. *Annu. Rev. Biophys. Biomol. Struct.* **29**:577–606.
- Bishop, A. C., C.-Y. Kung, K. Shah, L. Witucki, K. M. Shokat, and Y. Liu. 1999. Generation of monospecific nanomolar tyrosine kinase inhibitors via a chemical genetic approach. *J. Am. Chem. Soc.* **121**:627–631.
- Bishop, A. C., K. Shah, Y. Liu, L. Witucki, C. Kung, and K. M. Shokat. 1998. Design of allele-specific inhibitors to probe protein kinase signaling. *Curr. Biol.* **8**:257–266.
- Bishop, A. C., J. A. Ubersax, D. T. Petsch, D. P. Matheos, N. S. Gray, J. Blethrow, E. Shimizu, J. Z. Tsien, P. G. Schultz, M. D. Rose, J. L. Wood, D. O. Morgan, and K. M. Shokat. 2000. A chemical switch for inhibitor-sensitive alleles of any protein kinase. *Nature* **407**:395–401.
- Blacketer, M. J., C. M. Koehler, S. G. Coats, A. M. Myers, and P. Madaule. 1993. Regulation of dimorphism in *Saccharomyces cerevisiae*: involvement of the novel protein kinase homolog Elm1p and protein phosphatase 2A. *Mol. Cell. Biol.* **13**:5567–5581.
- Bouquin, N., Y. Barral, R. Courbyrette, M. Blondel, M. Snyder, and C. Mann. 2000. Regulation of cytokinesis by the Elm1 protein kinase in *Saccharomyces cerevisiae*. *J. Cell Sci.* **113**:1435–1445.
- Carroll, C., R. Altman, D. Schieltz, J. Yates, and D. R. Kellogg. 1998. The septins are required for the mitosis-specific activation of the Gin4 kinase. *J. Cell Biol.* **143**:709–717.
- Cross, F. 1990. Cell cycle arrest caused by CLN gene deficiency in *Saccharomyces cerevisiae* resembles START-I arrest and is independent of the mating-pheromone signalling pathway. *Mol. Cell. Biol.* **10**:6482–6490.
- Cross, F. 1995. Starting the cell cycle: what's the point? *Curr. Opin. Cell Biol.* **7**:790–797.
- Cross, F. R., and A. H. Tinkelenberg. 1991. A potential positive feedback loop controlling CLN1 and CLN2 gene expression at the start of the yeast cell cycle. *Cell* **65**:875–883.
- Cvrckova, F., C. De Virgilio, E. Manser, J. R. Pringle, and K. Nasmyth. 1995. Ste20-like protein kinases are required for normal localization of cell growth and for cytokinesis in budding yeast. *Genes Dev.* **9**:1817–1830.
- Cvrckova, F., and K. Nasmyth. 1993. Yeast  $G_1$  cyclins CLN1 and CLN2 and a GAP-like protein have a role in bud formation. *EMBO J.* **12**:5277–5286.
- Di Como, C. J., H. Chang, and K. T. Arndt. 1995. Activation of CLN1 and CLN2  $G_1$  cyclin gene expression by BCK2. *Mol. Cell. Biol.* **15**:1835–1846.
- Dirick, L., T. Bohm, and K. Nasmyth. 1995. Roles and regulation of Cln-Cdc28 kinases at the start of the cell cycle of *Saccharomyces cerevisiae*. *EMBO J.* **14**:4803–4813.
- Edgington, N. P., M. J. Blacketer, T. A. Bierwagen, and A. M. Myers. 1999. Control of *Saccharomyces cerevisiae* filamentous growth by cyclin-dependent kinase Cdc28. *Mol. Cell. Biol.* **19**:1369–1380.
- Ford, S. K., and J. R. Pringle. 1991. Cellular morphogenesis in the *S. cerevisiae* cell cycle: localization of the CDC11 gene product and the timing of events at the budding site. *Dev. Genet.* **12**:281–292.
- Gould, K. L., and P. Nurse. 1989. Tyrosine phosphorylation of the fission yeast  $cdc2^+$  protein kinase regulates entry into mitosis. *Nature* **342**:39–45.
- Haarer, B. K., and J. R. Pringle. 1987. Immunofluorescence localization of the *Saccharomyces cerevisiae* CDC12 gene product to the vicinity of the 10-nm filaments in the mother-bud neck. *Mol. Cell. Biol.* **7**:3678–3687.
- Hadwiger, J. A., C. Wittenberg, H. E. Richardson, M. de Barros-Lopes, and S. I. Reed. 1989. A novel family of cyclin homologs that control  $G_1$  in yeast. *Proc. Natl. Acad. Sci. USA* **86**:6255–6259.
- Hanks, S. K., and A. M. Quinn. 1991. Protein kinase catalytic domain sequence database: identification of conserved features of primary structure and classification of family members. *Methods Enzymol.* **200**:38–62.
- Harvey, S. L., and D. R. Kellogg. 2003. Conservation of mechanisms controlling entry into mitosis: budding yeast *wee1* delays entry into mitosis and is required for cell size control. *Curr. Biol.* **13**:264–275.
- Kellogg, D. R., A. Kikuchi, T. Fujii-Nakata, C. W. Turck, and A. Murray. 1995. Members of the NAP/SET family of proteins interact specifically with B-type cyclins. *J. Cell Biol.* **130**:661–673.
- Kellogg, D. R., and A. W. Murray. 1995. NAP1 acts with Clb2 to perform mitotic functions and suppress polar bud growth in budding yeast. *J. Cell Biol.* **130**:675–685.
- Lew, D. J., and S. I. Reed. 1993. Morphogenesis in the yeast cell cycle: regulation by Cdc28 and cyclins. *J. Cell Biol.* **120**:1305–1320.
- Longtine, M. S., D. J. DeMarini, M. L. Valencik, O. S. Al-Awar, H. Fares, C. De Virgilio, and J. R. Pringle. 1996. The septins: roles in cytokinesis and other processes. *Curr. Opin. Cell Biol.* **8**:106–119.
- Longtine, M. S., C. L. Theesfeld, J. N. McMillan, E. Weaver, J. R. Pringle, and D. J. Lew. 2000. Septin-dependent assembly of a cell cycle-regulatory module in *Saccharomyces cerevisiae*. *Mol. Cell. Biol.* **20**:4049–4061.
- Ma, J. X., Q. Lu, and M. Grunstein. 1996. A search for proteins that interact genetically with histone H3 and H4 amino termini uncovers novel regulators of the Swe1 kinase in *Saccharomyces cerevisiae*. *Genes Dev.* **10**:1327–1340.
- McMillan, J. N., M. S. Longtine, R. A. L. Sia, C. L. Theesfeld, E. S. G. Bardes, J. R. Pringle, and D. J. Lew. 1999. The morphogenesis checkpoint in *Saccharomyces cerevisiae*: cell cycle control of Swe1p degradation by Hsl1p and Hsl7p. *Mol. Cell. Biol.* **19**:6929–6939.
- McMillan, J. N., R. A. L. Sia, and D. J. Lew. 1998. A morphogenesis checkpoint monitors the actin cytoskeleton in yeast. *J. Cell Biol.* **142**:1487–1499.
- Mortensen, E., H. McDonald, J. Yates, and D. R. Kellogg. 2002. Cell cycle-dependent assembly of a Gin4-septin complex. *Mol. Biol. Cell* **13**:2091–2105.
- Norbury, C., and P. Nurse. 1992. Animal cell cycles and their control. *Annu. Rev. Biochem.* **61**:441–470.
- Nurse, P. 1990. Universal control mechanism regulating onset of M-phase. *Nature* **344**:503–508.
- Pruyne, D., and A. Bretscher. 2000. Polarization of cell growth in yeast. *J. Cell Sci.* **113**:365–375.
- Richardson, H. E., C. W. Wittenberg, F. Cross, and S. I. Reed. 1989. An essential  $G_1$  function for cyclin-like proteins in yeast. *Cell* **59**:1127–1133.
- Russell, P., and P. Nurse. 1987. Negative regulation of mitosis by *wee1*<sup>+</sup>, a gene encoding a protein kinase homolog. *Cell* **49**:559–567.
- Shulewitz, M. J., C. J. Inouye, and J. Thorner. 1999. Hsl7 localizes to a septin ring and serves as an adapter in regulatory pathway that relieves tyrosine phosphorylation of Cdc28 protein kinase in *Saccharomyces cerevisiae*. *Mol. Cell. Biol.* **19**:7123–7137.
- Sia, R. A. L., E. S. G. Bardes, and D. J. Lew. 1998. Control of Swe1p degradation by the morphogenesis checkpoint. *EMBO J.* **17**:6678–6688.
- Sreenivasan, A., and D. Kellogg. 1999. The Elm1 kinase functions in a mitotic signaling network in budding yeast. *Mol. Cell. Biol.* **19**:7983–7994.
- Stuart, D., and C. Wittenberg. 1995. CLN3, not positive feedback, determines the timing of CLN2 transcription in cyclin cells. *Genes Dev.* **9**:2780–2794.
- Tjandra, H., J. Compton, and D. R. Kellogg. 1998. Control of mitotic events by the Cdc42 GTPase, the Clb2 cyclin and a member of the PAK kinase family. *Curr. Biol.* **8**:991–1000.
- Tyers, M., G. Tokiwa, and B. Futcher. 1993. Comparison of the *Saccharomyces cerevisiae*  $G_1$  cyclins: Cln3 may be an upstream activator of Cln1, Cln2 and other cyclins. *EMBO J.* **12**:1955–1968.
- Weiss, E. L., A. C. Bishop, K. M. Shokat, and D. G. Drubin. 2000. Chemical genetic analysis of the budding yeast p21-activated kinase Cla4p. *Nat. Cell Biol.* **2**:677–685.
- Wijnen, H., and B. Futcher. 1999. Genetic analysis of the shared role of CLN3 and BCK2 at the  $G_1$ -S transition in *Saccharomyces cerevisiae*. *Genetics* **153**:1131–1143.
- Wittenberg, C., K. Sugimoto, and S. I. Reed. 1990.  $G_1$ -specific cyclins of *S. cerevisiae*: cell cycle periodicity, regulation by mating pheromone, and association with the p34<sup>CDC28</sup> protein kinase. *Cell* **62**:225–237.
- Zimmerman, Z., and D. R. Kellogg. 2001. The Sda1 protein is required for passage through Start. *Mol. Biol. Cell* **12**:201–219.