

## The In Vivo Response of Stem and Other Undifferentiated Spermatogonia to the Reversible Inhibition of Glial Cell Line-Derived Neurotrophic Factor Signaling in the Adult

JOSEPH SAVITT,<sup>a</sup> DOLLY SINGH,<sup>b</sup> CHAO ZHANG,<sup>c</sup> LIANG-CHIN CHEN,<sup>b</sup> JANET FOLMER,<sup>b</sup> KEVAN M. SHOKAT,<sup>c</sup> WILLIAM W. WRIGHT<sup>b</sup>

<sup>a</sup>Department of Neurology, Johns Hopkins School of Medicine, Institute for Cell Engineering, Baltimore, Maryland, USA; <sup>b</sup>Department of Biochemistry and Molecular Biology, Johns Hopkins Bloomberg School of Public Health, Baltimore, Maryland, USA; <sup>c</sup>Department of Cellular and Molecular Pharmacology, Howard Hughes Medical Institute, University of California San Francisco, San Francisco, California, USA

**Key Words.** Stem spermatogonia • Glial cell line-derived neurotrophic factor • Sertoli cell • Ret • Spermatogenesis

### ABSTRACT

Maintaining adequate numbers of spermatogonial stem cells is required for the production of the millions of sperm required for male fertility. To date, however, the mechanisms that regulate the size of this pool in the adult are poorly defined. Glial cell line-derived neurotrophic factor (GDNF) is required for establishing this pool in the prepubertal animal, but its *in vivo* function in the normal adult testis has never been examined directly. We used a chemical-genetic approach to address this issue. We generated mice carrying a single amino acid mutation (V805A) in Ret, the kinase subunit of the GDNF receptor. This mutation does not affect normal GDNF signaling but renders it susceptible to inhibition by the ATP competitive inhibitor, NA-PP1. When GDNF signaling was blocked in

adults for 11 days, only a few cells remained that expressed the stem spermatogonial markers, *Gfr $\alpha$ 1* and *Zbtb16*, and testicular Ret mRNA content was reduced markedly. These decreases were associated with depletion of functional stem spermatogonia; some were lost when GDNF signaling was inhibited for only 2 days while others survived for up to 11 days. However, when signaling was restored, the remaining stem cells proliferated, initiating tissue restoration. In conclusion, these results provide the first direct proof that GDNF acutely regulates the number of spermatogonial stem cells in the normal adult testis. Additionally, these results demonstrate different sensitivities among subpopulation of these stem cells to inhibition of GDNF signaling. *STEM CELLS* 2012;30:732–740

Disclosure of potential conflicts of interest is found at the end of this article.

### INTRODUCTION

Spermatogonial stem cells are the foundation of fertility of the adult male and preserving this foundation requires that when these cells replicate the formation of new stem cells is balanced with the generation of differentiating progeny [1]. The mechanisms that control this balance prevent the pathological accumulation of stem cells or, alternatively, the depletion of the stem cell pool. There is considerable evidence that Sertoli cells are integral to these mechanisms because they secrete glial cell line-derived neurotrophic factor (GDNF), which has been hypothesized to promote the self-renewal over the differentiation of replicating stem cells (reviewed in [1]). However, not all data support this hypothesis, and it has never been tested directly *in vivo* in the adult.

Evidence for a role of GDNF in regulating number of spermatogonial stem cells comes from both *in vitro* and *in vivo* studies.

In long-term culture, GDNF is required to maintain and expand stem spermatogonia, as measured by their ability to restore spermatogenesis when transplanted into a germ cell-deficient testis [2]. However, those results could be obtained either if GDNF promoted self-renewing replication of the stem spermatogonia *in vitro* or if it acted primarily as a stem cell survival factor. If GDNF specifically promotes self-renewal of replicating stem spermatogonia, absence of GDNF should result in a rapid loss of some of these cells within one cell cycle, which is estimated to be 43–46 hours in duration [3–8]. However, when cultures enriched in mouse stem spermatogonia were deprived of GDNF for 3 or 6 days, there was a significant increase in number of functional stem cells and this increase was identical to what was observed when cells were incubated with GDNF [9]. Moreover, the number of spermatogonia that did not act as functional stem cells was substantially higher when GDNF was added to the cultures. These results are the opposite of what is predicted by the

Author contributions: J.S.: developed and characterized the mouse model used for these studies, provided funding, and manuscript writing; D.S. and L.-C.C.: collection of data and data analysis and interpretation; C.Z.: provision of study material and manuscript writing; J.F.: collection of data; K.M.S.: conception and design, financial support, and manuscript writing; W.W.: conception and design, collection of data, financial support, and manuscript writing.

Correspondence: William W. Wright, Ph.D., Department of Biochemistry and Molecular Biology, Johns Hopkins Bloomberg School of Public Health, 615 N. Wolfe Street, Baltimore, Maryland 21205, USA. Telephone: 410-955-7830; Fax: 410-614-2356; e-mail: wwright@jhsp.edu Received August 25, 2011; accepted for publication December 19, 2011; first published online in *STEM CELLS EXPRESS* January 9, 2012. © AlphaMed Press 1066-5099/2012/\$30.00/0 doi: 10.1002/stem.1028

hypothesis that GDNF promotes self-renewal over differentiation. The current hypothesis is also challenged by the analysis of cell fate decisions by individual rat stem spermatogonia in culture [10]. In these experiments, one stem cell could be observed to undergo self-renewing replication while another in the same culture microenvironment produced differentiating progeny, leading to the proposal that cell fate decisions were regulated by mechanisms intrinsic to the stem cells themselves.

In vivo studies using traditional transgenic overexpression or a gene knockout of GDNF have examined the consequences of altered GDNF expression from the time of birth or earlier but have allowed neither an analysis of the effects of the loss of GDNF signaling specifically in the adult nor the consequences of restoration of this signaling. In vivo studies demonstrate that GDNF is essential for establishing the stem spermatogonial pool in the immature testis. Overexpression of GDNF resulted in the formation of clusters of undifferentiated spermatogonia many of which died by apoptosis, resulting in an infertile adult with many tubules that contained only a rim of spermatogonia [11]. Whether any were functional stem spermatogonia could not be determined, however, because they expressed the transgene and consequently recapitulated their abnormal phenotype when transplanted into a germ cell-deficient testis [12]. Testes of GDNF null mice were depleted of almost all germ cells within 7 days and the few germ cells that were present did not replicate [13]. Mice that were haploinsufficient for GDNF initiated the first wave of spermatogenesis, but afterward, many of their tubules experience a progressive loss of spermatogonia, spermatocytes, and then spermatids, resulting in a deficiency in germ cells when the mice reached sexual maturity. While these results can be viewed as supporting the hypothesis that GDNF promotes self-renewing replication of stem spermatogonia, it should be noted that the first wave of spermatogenesis is initiated from gonocytes and not from stem spermatogonia [14]. Thus, an alternative explanation for these data is that the primary effect of a deficiency in GDNF at birth is the failure of the gonocytes to give rise to a stem spermatogonial pool of normal size and function.

Given the importance of the proper regulation of numbers of stem spermatogonia to male fertility throughout adulthood and the fact that our knowledge of the regulation of these cells by GDNF is limited by available experimental paradigms, we concluded that a new paradigm was needed that allowed one to study the effects of manipulating GDNF signaling to stem spermatogonia within the physiological context of the normal adult testis. Therefore, we developed a chemical-genetic approach that allows signaling from this growth factor to be reversibly inhibited in a highly specific manner [15–18]. GDNF signaling is initiated when it binds to the ligand-binding subunit of its receptor, *Gfr $\alpha$ 1*, which causes activation and autophosphorylation of Ret, the tyrosine kinase subunit of the receptor [19]. The mice used for our studies carry a single amino acid mutation (V805A) in Ret, which has no effect on baseline Ret kinase activity. However, it substantially increases its affinity for the cell permeable ATP competitive inhibitor, NA-PP1 [20]. While Ret is also a subunit for receptors of other GDNF family members, knockouts of the ligand binding subunits for these other receptors have no effect on testis morphology or on male fertility [21–23]. Therefore, inhibition of Ret kinase activity by NA-PP1 allows one to specifically evaluate the function of GDNF in the normal adult testis. Furthermore, when NA-PP1-treatment is terminated, GDNF signaling is restored.

Using this chemical-genetic approach, we examined the hypotheses that GDNF was essential for maintenance of the pool of spermatogonial stem cells in the normal adult testis and that one function of this growth factor was to stimulate

self-renewing replication of the stem cell pool. We test the prediction made by the second hypothesis that stem spermatogonia are lost if GDNF signaling is inhibited for 2 days, the approximate length of their cell cycle. We demonstrate that treatment of Ret (V805A) mice with NA-PP1 for 2 days causes loss of some stem spermatogonia, while others persist for up to 11 days. Furthermore, our data suggest that once GDNF signaling is restored, the remaining stem cells not only proliferate but also move within the basal compartment of the epithelium, insuring that empty stem cell niches are reseeded with the cells that ultimately give rise to the millions of sperm, which are required for male fertility [24].

## MATERIALS AND METHODS

### Animals

Mice carrying a mutation (V805A) in the ATP binding site of Ret were generated as previously described [25]. The *frt*-flanked neomycin resistance cassette in the targeting construct (Supporting Information Fig. S1) was removed by crossing these mice with B6; SJL-Tg(ACTFLPe) 9205 DG M/J mice (Jackson Laboratories, Bar Harbor, ME). Mice that were homozygous for the Ret (V805A) mutation were identified by polymerase chain reaction (PCR) analysis of genomic DNA using primers that crossed the 5' *LoxP* site of the targeting construct:

- Ret F (36580): CCTTGGGCCTGCTGAGCACGGG
- RET R (36858): GGAGGCAGGAAGGCCTGTGC

PCR conditions were 4 minutes at 95°C followed by 35 cycles of 30 seconds at 95°C, 45 seconds for 57°C, 45 seconds at 72°C, followed by a 7-minute incubation at 72°C. Mice were 70–100 days of age at the start of the experiment and the Johns Hopkins University Institutional Animal Care and Use Committee approved their use.

### Testing the Efficacy of the Different ATP Competitive Inhibitors of Ret (V805A)

Full-length cDNAs for wild-type Ret and Ret (V805A) were cloned into the pRK5 vector (BD Biosciences, San Diego, CA, www.bdbiosciences.com) and transfected into confluent HEK 293 cells using lipofectamine (Invitrogen, Carlsbad, CA, www.invitrogen.com). After 3 hours, medium with serum was added along with NA-PP1 or a related inhibitor. Cells were lysed 16 hours. Later, fractionated by SDS-PAGE, blotted onto nylon and incubated with Anti-Ret (Y1062) (Santa Cruz Biotechnology, Santa Cruz, CA, www.scbt.com) and the ECL detection system (GE Healthcare, Piscataway, NJ, www3.gehealthcare.com). Some blots were reprobed for total Ret (Santa Cruz Biotechnology).

### Synthesis and Administration of NA-PP1

NA-PP1 and related compounds were synthesized as previously described [20]. To convert NA-PP1 into an HCl salt, 400 mg of NA-PP1 was dissolved in 40 ml of methanol plus 5 ml of 1.25 M HCl in methanol. NA-PP1 was dissolved by heating and stirring, the salt was dried using a rotovap, dissolved in ethanol (62.5 mg/ml), and stored under nitrogen at –20°C. One part of NA-PP1 in ethanol was diluted into nine parts in saline/cremophor EL (7:2) and 62.5 mg NA-PP1/kg b.wt. was injected subdermally between the scapulae. Vehicle-treated control mice were injected with 100  $\mu$ l of ethanol/saline/cremophor EL per 10-g b.wt.

### Analysis of Tissues

Seminiferous tubules were manually isolated in phosphate-buffered saline (PBS) and fixed for 2 hours in 4% paraformaldehyde. After extensive washing, tubules were processed for detection of

the stem spermatogonial markers, Zbtb16 (previously called PLZF) and Gfrz1. To detect Zbtb16, tubules were dehydrated through graded methanol, incubated for 2 hours in methanol/dimethylsulfoxide (DMSO)/3% H<sub>2</sub>O<sub>2</sub> (4:1:1) and rehydrated through a graded series of methanol to PBS. Tubules were next incubated for 2 hours in PBS-MT (2-g nonfat dried milk, 0.5 ml Triton X-100 per 100 ml PBS) and then incubated overnight at 4°C with shaking in 4 µg/ml goat anti-PLZF (R&D Systems, Minneapolis, MN, www.rndsystems.com) in PBS-MT. Tubules were washed at room temperature twice for 15 minutes, five times for 1 hour in PBS-MT, and then incubated overnight at 4°C in 4 µg/ml Alexa fluor-488 rabbit anti-goat IgG (Invitrogen) in PBS-MT. Following washing, tubules were mounted in Vectashield (Vector Laboratories, Burlingame, CA, www.vectorlabs.com). To detect Gfrz1, tubules were incubated for 2 hours in PBS-AT (1-g BSA, 0.1-g Triton X-100 per 100 ml PBS) and then overnight at 4°C in 2 µg/ml goat anti-Gfrz1 (R&D Systems) diluted in PBS-AT. Tubules were washed six times for 15 minutes in PBS-AT and then incubated overnight at 4°C in 4 µg/ml Alexa fluor-488 rabbit anti-goat IgG diluted in PBS-AT. Following washing, tubules were mounted in Vectashield. Digital images were captured with a Nikon Eclipse Microscope equipped with a cooled CCD camera (QImaging, Surrey, BC, CA, www.qimaging.com) and imported into iVision (Biovision Technologies, Exton, PA, www.biovis.com). From these images, we evaluated the number and distribution of Zbtb16<sup>+</sup> and Gfrz1<sup>+</sup> spermatogonia. We classified these cells as A single (A<sub>s</sub>) spermatogonia, a subpopulation of which are the functional stem cells, as differentiating progeny of A<sub>s</sub> cells, the A paired (A<sub>pr</sub>) spermatogonia, or as A aligned (A<sub>al</sub>) spermatogonia, which form chains of 4-16 cells [1] (Fig. 1). A change in the ratio of A<sub>pr</sub> or A<sub>al</sub> spermatogonia to A<sub>s</sub> cells would indicate increased differentiation of replicating stem cells.

To evaluate the relationship between duration of inhibited GDNF signaling and loss of functional stem cells, we took advantage of the fact that this loss is followed by depletion of increasing mature spermatogenic cells. Testes were fixed in 5% glutaraldehyde in cacodylate buffer, postfixed in osmium tetroxide, embedded in Epon 812, and 1-µm-thick sections stained with toluidine blue. Four to six different testis cross-sections are evaluated and a minimum of 300 tubules per testis were examined for the presence or absence of spermatogonia, spermatocytes, and/or spermatids and for their stage of the cycle of the seminiferous epithelium. (Each stage is defined by the presence of differentiated spermatogonia, spermatocytes, and spermatids at specific phases of development. These cell mature synchronously, and consequently the epithelium progresses from one stage to the next [Supporting Information Fig. S2].) This analysis identified the stages during which a given spermatogenic cell type was lost. Since the duration of each stage is defined the number of days over which the stem cells are lost is reflected in the number of days over which a more mature germ cell type is lost [26, 27].

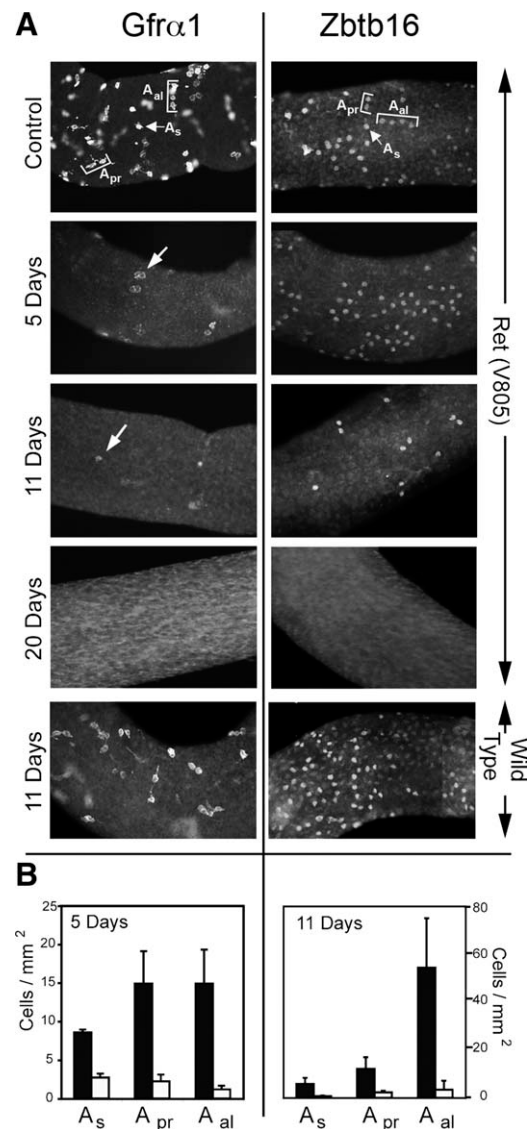
Kidneys and livers were emersion fixed in Bouins fixative, embedded in paraffin and 5 µm sections stained with hematoxylin and eosin.

### Measurement of Transcript Levels

RNA was isolated using RNeasy kits (Qiagen, Valencia, CA, www.qiagen.com), cDNA was synthesized using Superscript III (Invitrogen) and transcripts encoding Zbtb16, Gfrz1, Ret, and 18S rRNA were quantified using TaqMan primers (Life Technologies Corp, Carlsbad, CA, www.lifetechnologies.com). Standard curves for each assay were generated from cloned, sequence-verified cDNA standards and the amount of each transcript was normalized to the amount of 18S rRNA in each sample.

### Statistical Analysis

Cell counts were analyzed using a nested analysis of variance (ANOVA) and other data were analyzed by ANOVA. Statistical analysis used StatView (SAS Institute Inc, Cary, NC, www.sas.com). Differences were defined as significant at  $p \leq .05$ .



**Figure 1.** Inhibition of glial cell line-derived neurotrophic factor (GDNF) signaling results in the sequential loss of Gfrz1<sup>+</sup> and then Zbtb16<sup>+</sup> A<sub>s</sub>, A<sub>pr</sub>, and A<sub>al</sub> spermatogonia. (A): Representative whole mounts of seminiferous tubules of Ret (V805A) mice that were treated daily with 63.5 mg/kg of NA-PP1 for 5, 11, or 20 days or of Ret (V805A) mice that were treated for 20 days with vehicle (control) ( $n = 4-6$  mice per group). Also shown are tubules of wild-type mice that were treated for 11 days with NA-PP1 ( $n = 4$  per group). Representative Gfrz1<sup>+</sup> or Zbtb16<sup>+</sup> A<sub>s</sub>, A<sub>pr</sub>, and A<sub>al</sub> spermatogonia are identified on the control tubules. The fluorescence that is out of focus in the control tubule immunostained for Gfrz1 originates from cells on the other side. There were only a few faintly stained Gfrz1<sup>+</sup> cells on tubules of Ret (V805A) mice following 5 or 11 days of treatment with NA-PP1 (arrows). The density of Zbtb16<sup>+</sup> spermatogonia was normal when GDNF signaling was inhibited for 5 days but was decreased after 11 days. Gfrz1<sup>+</sup> and Zbtb16<sup>+</sup> cells were absent when GDNF signaling was inhibited for 20 days. (B): Quantifies the effect of injecting Ret (V805A) mice with NA-PP1 (white bar) or vehicle (black bar) on the densities of A<sub>s</sub>, A<sub>pr</sub>, and A<sub>al</sub> spermatogonia that expressed Gfrz1<sup>+</sup> ( $n = 3$ ) or Zbtb16<sup>+</sup> ( $n = 4$ ). Analysis of Gfrz1<sup>+</sup> and Zbtb16<sup>+</sup> cells was conducted after 5 and 11 days of treatment, respectively. Data are expressed as mean + SEM.

## RESULTS

### Characterization of Ret (V805A) Mice and Their General Response to NA-PP1

The first step in generating a mouse allowing reversible inhibition of GDNF signaling was to engineer the Ret kinase domain such that an otherwise inert small molecule could act as a high affinity inhibitor of kinase activity. We selected the mutation (V805A) by comparing the sequence of RET to other kinases that have been targeted in this manner (Supporting Information Fig. S3). Transient transfection analysis demonstrated that this mutation did not affect baseline kinase activity but made RET susceptible to inhibition by NA-PP1 (Supporting Information Fig. S4). We then generated mice that were homozygous for this mutation and verified the ability of NA-PP1 to inhibit Ret by injecting it into pregnant mice from embryonic day 9 until birth. Homozygous pups born to these mothers died by P2 due to hypoplastic kidneys, thereby recapitulating the Ret knockout phenotype [28]. However, treating adult male Ret (V805A) mice or wild-type mice for 30 days with NA-PP1 had no effect on body weight, or on kidney and liver histology (Supporting Information Figs. S5 and S6). Additionally, testes weights of wild-type and Ret (V805A) mice were unaffected when treated with NA-PP1 for 30 and 20 days, respectively (Supporting Information Fig. S5). Thus, NA-PP1 is an effective *in vivo* inhibitor of Ret function and has no demonstrable toxicity or off-target effects in adults.

### Inhibition of GDNF Signaling in the Adult Causes Loss of the Expression of the Stem Spermatogonial Markers, Gfrz1, Zbtb16, and Ret

Initially, to test the hypothesis that GDNF is required by spermatogonial stem cells in the normal adult testis, we treated adult male Ret (V805A) mice for 5, 11, or 20 days with NA-PP1 and examined Gfrz1<sup>+</sup> and Zbtb16<sup>+</sup> spermatogonia. Figure 1A presents results that are characteristic of four to six mice per experimental group. When GDNF signaling was inhibited for 5 days, there were fewer Gfrz1<sup>+</sup> spermatogonia on the tubules and the amount of protein per cell as measured by signal intensity was reduced as well. Very few Gfrz1<sup>+</sup> cells were detected after 11 days and none after 20 days. By contrast, number of Zbtb16<sup>+</sup> spermatogonia appeared unchanged at 5 days, but their numbers were reduced after 11 days and they were absent after 20 days. By contrast, NA-PP1 had no effect on wild-type mice (Fig. 1A). (The faintly staining Zbtb16<sup>+</sup> cells on tubules of wild-type mice are

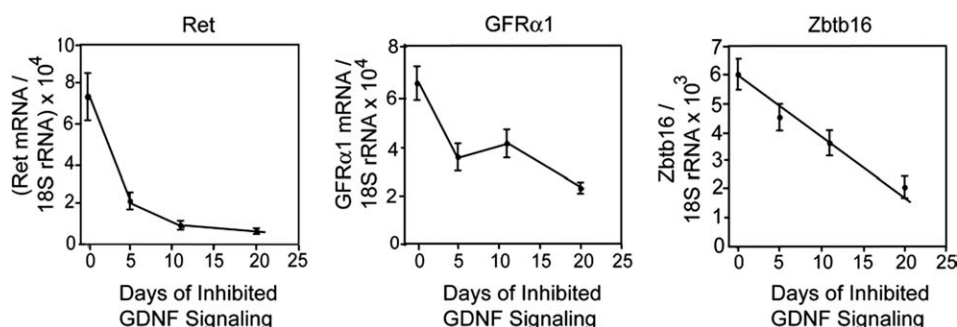
normally detected at stages X to II of the cycle [Supporting Information Fig. S7].)

To quantify these results, we enumerated Gfrz1<sup>+</sup> or Zbtb16<sup>+</sup> A<sub>s</sub>, A<sub>pr</sub>, and A<sub>al</sub> spermatogonia on tubules from Ret (V805A) mice treated for 5 or 11 days with NA-PP1 or with vehicle. After 5 days, densities of Gfrz1<sup>+</sup> A<sub>s</sub>, A<sub>pr</sub>, and A<sub>al</sub> spermatogonia were significantly reduced to 32%, 15%, and 7% of vehicle-treated controls, respectively (Fig. 1B). After 11 days, the densities of Zbtb16<sup>+</sup> A<sub>s</sub>, A<sub>pr</sub>, and A<sub>al</sub> spermatogonia were significantly reduced to 12%, 21% and 6% of control, respectively (Fig. 1B).

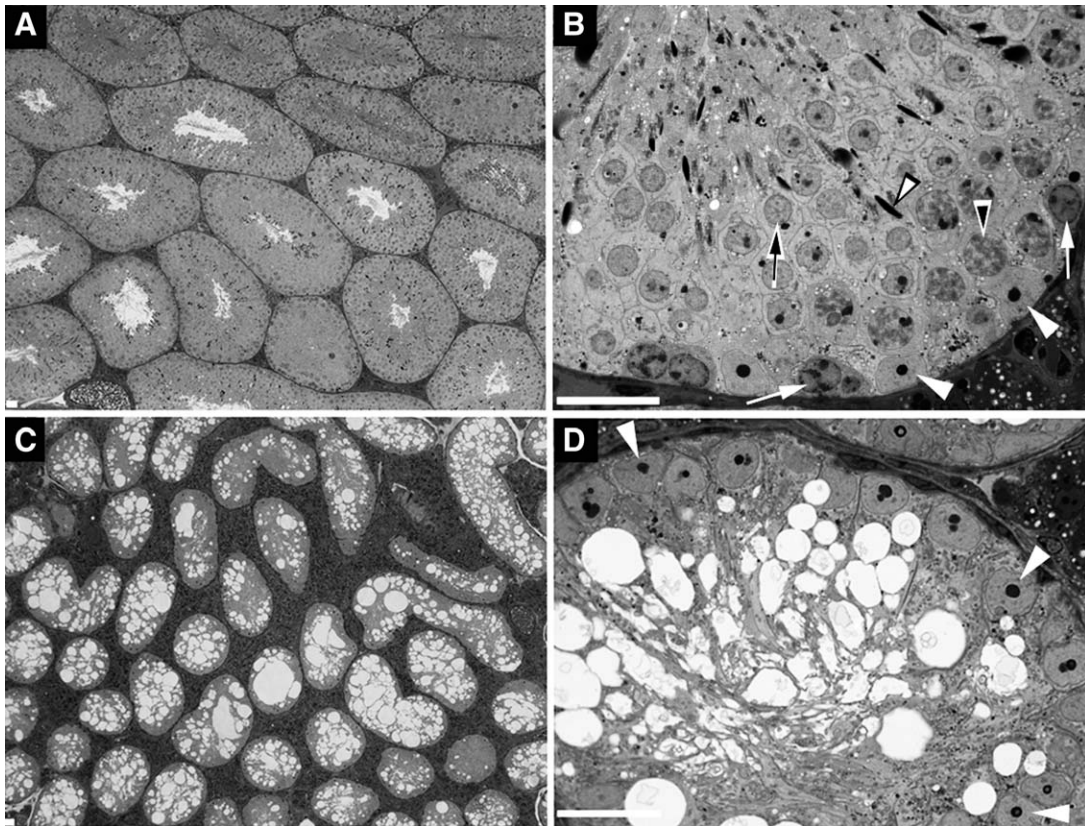
To extend this analysis, we measured the levels of transcripts encoding Ret, Gfrz1, and Zbtb16 (Fig. 2). The testicular levels of Ret mRNA and Gfrz1 mRNA were similar in control mice, but after GDNF signaling was inhibited, there was a more rapid, logarithmic decline of expression of Ret mRNA; at 20 days, Ret and Gfrz1 mRNA levels were 9% and 34% of control, respectively. Additionally, the expression of Zbtb16 mRNA decreased linearly to 33% of control by 20 days. Taken together, the data in Figures 1 and 2 demonstrate that in the normal adult testis, inhibition of GDNF signaling leads to the rapid loss of expression of three different markers of spermatogonial stem cells. Furthermore, these data suggest that *in vivo*, the Ret gene is a direct target of the signal transduction cascade emanating from the kinase that it encodes.

### Inhibition of GDNF Signaling for 30 Days Causes Loss of All Functional Stem Spermatogonia from a Normal Adult Testis

While Figure 2 shows that levels of transcripts encoding Ret, Gfrz1, and Zbtb16 were greatly reduced after 20 days, these transcripts were still detectable, raising the issue of whether inhibition of GDNF signaling caused stem and other undifferentiated spermatogonia to be lost or whether this inhibition only reduced the expression of the stem cell markers to levels that were not detectable by immunocytochemistry. Therefore, to test for the loss of functional stem cells, we injected adult Ret (V805A) and wild-type mice with NA-PP1 for 30 days and then collected tissues immediately or after an additional 35 days ( $n = 5$  mice per group). We treated mice for 30 days because extrapolation of the data in Figure 2 predicted that this period of time was required for the complete disappearance of transcripts encoding Ret, Gfrz1, and Zbtb16. Testes were collected 35 days after treatment because this is the time required for completion of spermatogenesis in the mouse [26]. Thus, an animal without any stem and other A<sub>s</sub>, A<sub>pr</sub>, and A<sub>al</sub> spermatogonia would have no spermatogenic cells 35-day later. Consistent with this prediction, testes of NA-PP1-treated Ret (V805A) mice weighed  $55.4 \pm 4.4$  mg while testes of



**Figure 2.** Inhibition of glial cell line-derived neurotrophic factor (GDNF) signaling results in a progressive loss of Ret, Gfrz1 and Zbtb16 mRNAs from the testis. Data (mean  $\pm$  SEM;  $n = 5$ -6/group) are expressed as the numbers of molecules of each transcript divided by numbers molecules of 18S rRNA in the same sample. Control Ret (V805A) mice (0 days inhibited GDNF signaling) were injected with vehicle for 5 or 11 days. Abbreviation: GDNF: glial cell line-derived neurotrophic factor.



**Figure 3.** Inhibition of GDNF signaling for 30 days results in the loss of all spermatogonial stem cells from the mature testis of Ret (V805A) mice. This figure shows the testicular histology of wild-type (A, B) and Ret (V805A) (C, D) mice treated for 30 days with NA-PP1 and testes collected 35 days thereafter. The data are representative of all five mice in each group. In panels (B) and (D), white arrowheads point to Sertoli cell nuclei. In panel (B), white arrows point to spermatogonia, the black-on-white arrowhead points to a nucleus of a pachytene spermatocyte, the black-on-white arrow points to a round spermatid, and the white-on-black arrowhead points to a nucleus of an elongate spermatid. Bar = 20  $\mu$ m.

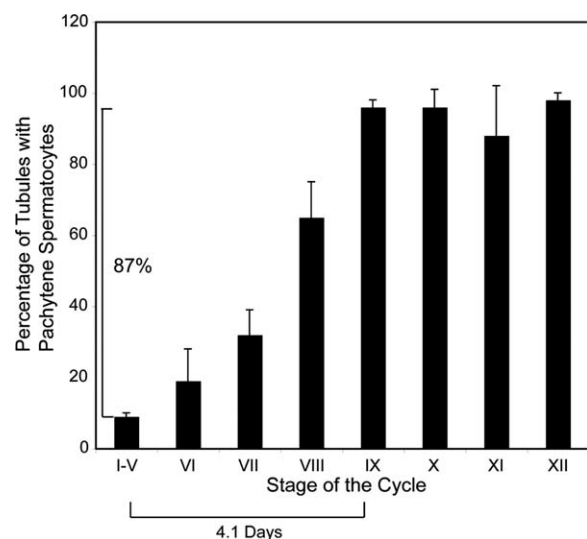
vehicle-treated mice weighed  $217 \pm 9.4$  mg (mean  $\pm$  SEM). Figure 3 shows the testicular histology of wild-type and Ret (V805A) mice that had been injected for 30 days with NA-PP1 and testes collected 35 days later. Examination of at least 300 tubules from each of five treated wild-type mice demonstrated that  $97 \pm 2.5\%$  (mean  $\pm$  SEM) of the tubules contained a full complement of spermatogenic cells (Fig. 3A, 3B). By contrast, none of tubules of the five Ret (V805A) mice contained a single spermatogenic cell. Thus, spermatogonial stem cells were lost during the 30 days of treatment of Ret (V805A) mice with NA-PP1 (Fig. 3C, 3D).

Does inhibition of GDNF signaling cause a synchronous loss of spermatogonial stem cells or are these cells lost over an extended period of time? We answered this question by examining testes from mice that were injected for 30 days with NA-PP1 and samples collected 24 hours later. As discussed in Materials and Methods, because loss of stem cells leads subsequently to loss of more mature spermatogenic cells, the time over which the stem cells are lost is reflected in the time over which a more mature germ cell type is lost. This loss required a substantial period of time for it was common to find two apposing tubules at stages VII or VIII where one tubule contained pachytene spermatocytes, round spermatids, and elongate spermatids while the other contained only the later two cell types (Supporting Information Fig. S8). Quantitative analysis showed that at stages I through V, only 9% of the tubules contained pachytene spermatocytes while at stage IX, 96% of the tubules contained these cells (Fig. 4). As approximately 4.1

days are required for a tubule to progress from stage III (half way between I and V) to stage IX (Supporting Information Fig. S7), we conclude that during the 30 days that the Ret (V805A) mice were treated with NA-PP1, 87% of the stem spermatogonia were lost over a period of 4.1 days.

#### A Small Percentage of Stem Spermatogonia Remain After Inhibition of GDNF Signaling for 11 Days

To gain a better understanding how rapidly loss of GDNF signaling causes loss of stem spermatogonia, we also treated Ret (V805A) mice and wild-type mice for 11 days with NA-PP1, which reduces Ret mRNA levels in testes of Ret (V805A) mice to 10% of control (Fig. 2). Thirty-five days later, testes of all wild-type mice were morphologically normal (Fig. 5A, 5B). Testes of Ret (V805A) collected 24 hours after the last injection with NA-PP1 were also morphologically normal, through analysis of tubule whole mounts revealed very few  $Gfrz1^+$  cells all of which were  $A_s$  spermatogonia (Fig. 5C, 5D). By contrast, 35 days later, 97% of the seminiferous tubules of Ret (V805A) mice contained either no spermatogenic cells or only elongate spermatids (Supporting Information Fig. S9). However, 3% of the tubules exhibited active spermatogenesis and this correlated with the presence of scattered but dense clusters of  $Gfrz1^+$  spermatogonia (Fig. 5E, 5F). The number of these clusters ( $0.24 \pm 0.14$  clusters per  $\text{mm}^2$ ; mean  $\pm$  SEM) was similar to the number of the individual  $Gfrz1^+$   $A_s$  spermatogonia on tubules that were examined 24 hours after the last of



**Figure 4.** When glial cell line-derived neurotrophic factor signaling is inhibited, 87% of stem spermatogonia are lost over a period of 4.1 days. Ret V805A mice were treated for 30 days with NA-PP1, testes were collected 1-day after the last injection and then processed for light microscopy. The stage of the cycle of each tubule in a testis cross-section was identified and scored as containing no pachytene spermatocytes or as containing at least one pachytene spermatocyte. Data are presented as the percentage of tubules at each stage containing at least one pachytene spermatocyte (mean  $\pm$  SEM;  $n = 4$  animals). At stages XI and XII, diplotene or secondary spermatocytes were scored rather than pachytene spermatocytes. Since the loss of stem spermatogonia eventually leads to the loss of pachytene spermatocytes, and since the duration of each stage of the cycle is known (Supporting Information Fig. S7) the period of time over which 87% of the pachytene spermatocytes are lost provides an estimate of the period of time over which a similar percentage of stem spermatogonia are lost.

the 11 injections of NA-PP1 ( $0.46 \pm 0.14$  cells per  $\text{mm}^2$ ). We conclude that inhibition of GDNF signaling for 11 days caused loss of approximately 97% of the stem spermatogonia. However, when GDNF signaling was restored, the remaining undifferentiated spermatogonia acted as stem cells, proliferated, and began to rebuild the tissue.

### Some Stem Spermatogonia are Lost After Inhibition of GDNF Signaling for 2 Days

As noted in Introduction, it has been hypothesized that GDNF promotes self-renewal over differentiation of replicating spermatogonial stem cells. This hypothesis predicts that treatment of Ret (V805A) mice with NA-PP1 for 2 days, the approximate duration of the one stem cell cycle, would cause significant stem cell loss. Therefore, we injected Ret (V805A) mice for 2 days with NA-PP1 or with vehicle and examined the testes 44 days later ( $n = 4$  per group). Testes of all control mice were normal, but there was considerable heterogeneity in the histology of tubules of NA-PP1-treated mice (Fig. 6). While 25.6% of the tubules of treated mice were morphologically normal, 9% of the tubules contained Sertoli cells and only a few elongate spermatids, indicating that these tubules lacked stem spermatogonia. The remaining tubules were missing one or two generations of germ cells although almost all contained spermatogonia and/or preleptotene spermatocytes. To assess the number of undifferentiated spermatogonia at the end of the experiment, we assayed both the densities of  $\text{Gfr}\alpha 1^+$  spermatogonia and the cross-sectional areas of the seminiferous tubules (Supporting Information Fig. S10).

While the densities of undifferentiated spermatogonia were similar in treated and control mice, the cross-sectional areas of tubules of controls were 40% larger than tubules of treated mice. Since the decrease in the cross-sectional area of the tubule is proportional to the decrease in its total surface area, the testes of treated mice contained significantly fewer  $\text{Gfr}\alpha 1^+$  spermatogonia than controls.

## DISCUSSION

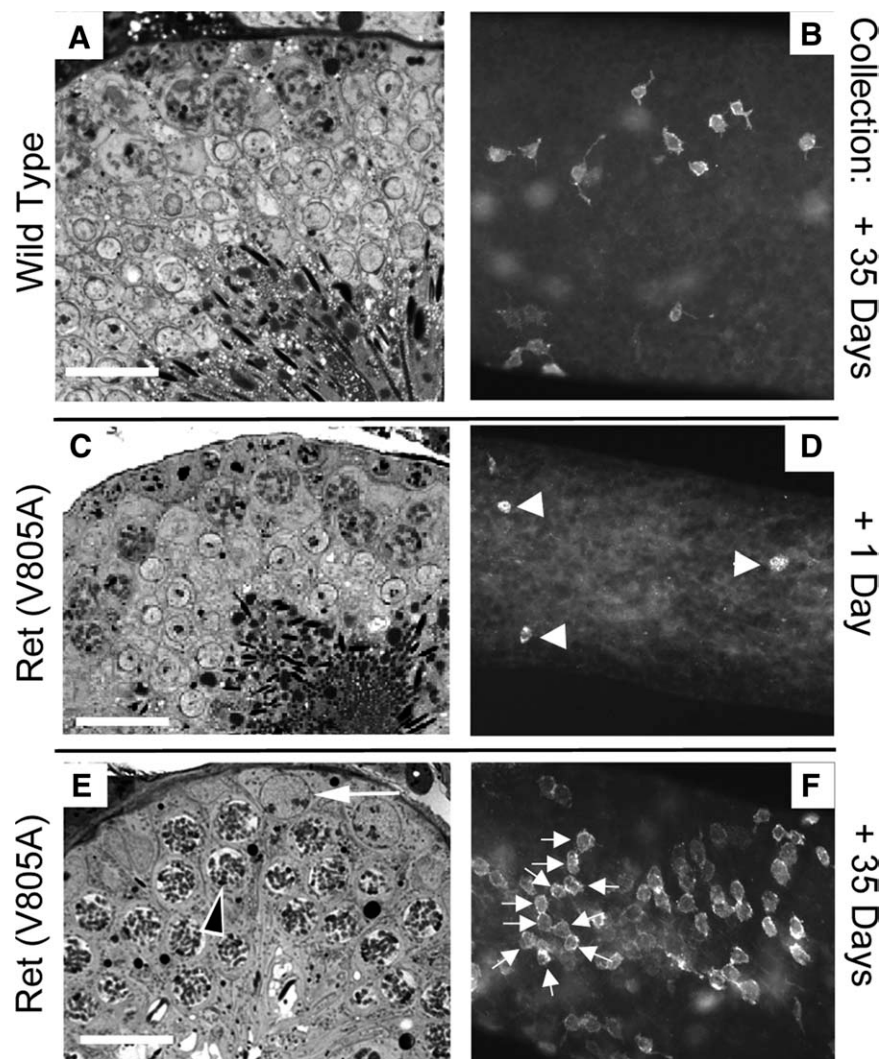
### A Unique In Vivo Approach to the Study of Adult Stem Cells

This is the first report of the use of a chemical-genetic approach to study the regulation of any adult stem cell by a growth factor. There are three advantages to this experimental strategy that are generally relevant to stem cell biology. The first is that the study starts with a completely normal pool of stem cells. The second is that it allows one to analyze the in vivo response of stem cells to acute changes in signaling from a specific growth factor. The matching of the mutation in the ATP binding site of the kinase subunit of the receptor with the structure of the ATP competitive inhibitor ensures that inhibition is both efficient and specific. The other currently available approach to inactivating receptor signaling in the adult, inducible Cre-mediated recombination, requires a substantially longer period of time. Cre recombinase expression or translocation into the nucleus must be followed by excision of the targeted gene, turnover of the encoded transcript and then turnover of the receptor subunit itself. The third advantage of the chemical-genetic approach is that the loss of signaling is reversible. These advantages are evident in our results.

Previous studies have demonstrated that in vivo GDNF is required for formation of the stem spermatogonial pool during pubertal maturation of the testis. Ours is the first to prove that this growth factor is required for the maintenance of these stem cells in the normal adult testis. And in contrast to the report that in vitro stem spermatogonial numbers increased when cultured in the absence of GDNF for 3 or 6 days [9], our data show that in vivo inhibition of GDNF signaling for only 2 days causes stem cell loss. However, many stem spermatogonia persisted even when GDNF signaling was inhibited for up to 11 days, suggesting that other factors intrinsic or extrinsic to these cells modulate their response to GDNF. We also observed that inhibition of GDNF signaling caused a more rapid loss  $\text{GFR}\alpha 1^+$  cells than of  $\text{Zbtb16}^+$  cells. Since in a mature testis, almost all  $\text{GFR}\alpha 1^+$  cells also express  $\text{Zbtb16}$ , the sequential loss of  $\text{GFR}\alpha 1$  expression and then of  $\text{Zbtb16}$  expression suggests that GDNF suppresses cell differentiation [29]. However, our data do not reveal an increase in the ratio of  $A_{pr}$  or  $A_{al}$  spermatogonia to  $A_s$  spermatogonia, as is predicted by the hypothesis that GDNF promotes self-renewal of replicating stem and other  $A_s$  spermatogonia over their differentiation [1]. The experimental paradigm described herein should allow one to determine if in a normal mature testis, GDNF suppresses differentiation of both replicating and non-replicating stem and other  $A_s$  spermatogonia or whether its primary in vivo function is to inhibit their apoptosis.

### The Potential Explanation of Why There are Different Sensitivities Among Subpopulation of Stem Spermatogonia to Inhibition of GDNF Signaling

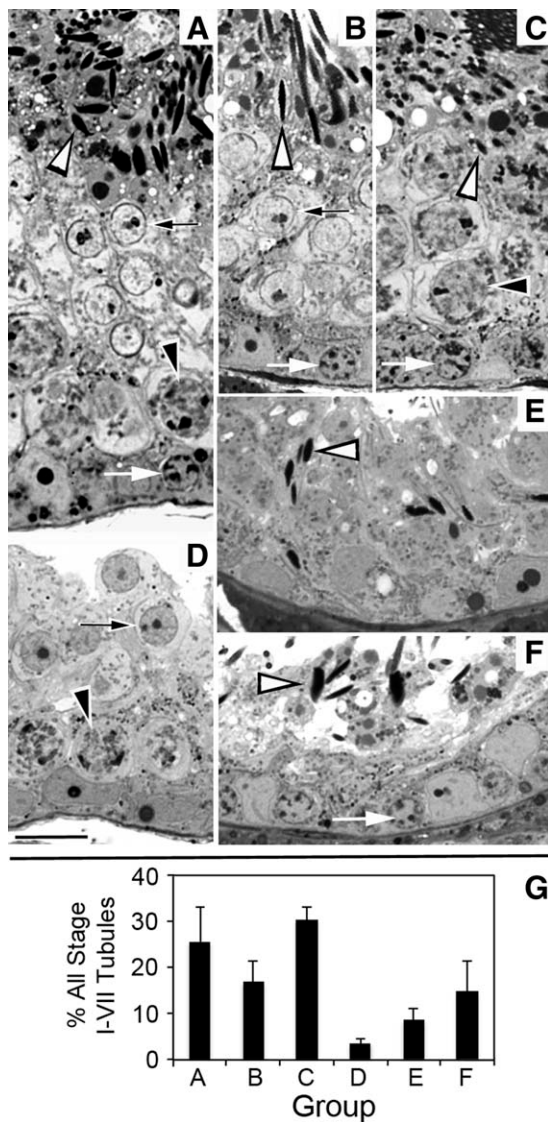
We estimate that upon inhibition of GDNF signaling, most stem spermatogonia are lost in a 4.1-day window that occurs between 2 and 11 days of treatment. However, some stem



**Figure 5.** A small percentage of stem spermatogonia persist when glial cell line-derived neurotrophic factor (GDNF) signaling is inhibited for 11 days, and they begin to rebuild the stem cell pool when signaling is restored. Ret (V805A) and wild-type mice were treated or 11 days with NA-PP1 and testes were collected for analysis either 1 or 35 days after the last injection ( $n = 4$  mice per group). Panels (A, C, and E) are 1- $\mu\text{m}$ -thick cross-sections of seminiferous tubules and panels (B, D, and F) are whole mounts of tubules immunostained for Gfrz1. Panels (A) through (C) are representative of all tubules in their respective treatment groups. Arrowheads in (D) point to three of the few weakly stained Gfrz1<sup>+</sup> A<sub>s</sub> spermatogonia that persisted when GDNF signaling was inhibited for 11 days. Panel (E) is representative of approximately 3% of the tubule cross-sections of each testis of Ret (V805A) mice that were examined 35 days after the last injection of NA-PP1. The black-on-white arrowhead points to a spermatocyte and the white arrow points to a spermatogonium. The rest of the tubules in this treatment group contained either no spermatogenic cells or only elongate spermatids (Supporting Information Fig. S9). Panel (F) shows one of the dense patches of Gfrz1<sup>+</sup> A<sub>al</sub> spermatogonia, which were dispersed along the tubules of Ret (V805A) mice that were examined 35 days after treatment. In this patch, the arrows point to 10 cells in a chain. Bar = 20  $\mu\text{m}$ .

cells are lost by 2 days and others persist for at least 11 days. While different types of adult stem cells in a tissue have been shown to respond differently to the same growth factor, our data are the first to show significantly different sensitivities of subpopulation of a single stem cell type to loss of growth factor signaling [30]. A potential explanation for these different sensitivities comes from our report that in rats, Sertoli cell concentrations of both GDNF mRNA and protein are greatest at stages XII-III (equivalent to stages X-III in the mouse) [31]. Therefore, loss of GDNF signaling may have a preferential affect on stem cells in an environment of elevated GDNF concentration. This proposal predicts that inhibition of GDNF signaling would primarily affect stem cells in stage X-II tubules. Since these stages constitute 3.7 days of the 8.6-day cycle of the mouse seminiferous epithelium, 4.9 days would

be required for all stem spermatogonia to be affected. However, if as hypothesized, loss of GDNF signaling primarily affects replicating cells, the long duration of the cell cycle of stem and other undifferentiated spermatogonia and the fact that these cells do not replicate synchronously may also contribute to the variation we noted [1]. Additionally, a small subpopulation of stem spermatogonia are long cycling cells, and it has been posited that such cells reenter the cell cycle in response to tissue damage [32–34]. In our experiments, the immediate damage is the depletion of most of the stem spermatogonia as well as their immediate progeny. We hypothesize that in Ret (V805A) mice, these long cycling cells remain in the seminiferous epithelium for at least 11 days of treatment with NA-PP1 and that these cells are lost if they reenter the cell cycle when GDNF signaling is still blocked.



**Figure 6.** Some stem spermatogonia are lost when glial cell line-derived neurotrophic factor signaling is inhibited for only 2 days, resulting in a diversity of seminiferous tubule morphologies 44 days later. (A): A normal stage VII seminiferous tubule containing all spermatogenic cell types. (B): A stage VII tubule lacking pachytene spermatocytes. (C): A stage VII tubule lacking round spermatids. (D): A stage I-VII tubule lacking elongate spermatids. (E): A seminiferous tubule that contains only Sertoli cells and elongate spermatids. (F): A stage VII seminiferous tubule lacking both round spermatids and pachytene spermatocytes. White arrows point to spermatogonia or preleptotene spermatocytes. Black-on-white arrowheads point to pachytene spermatocytes. Black-on-white arrows point to round spermatids. White-on-black arrowheads point to nuclei of elongate spermatids. (G): The mean percentage + SEM of stage I-VII seminiferous tubules exhibiting each of these morphologies. Testes from four separate animals were analyzed. Images in panels (A-F) are all at the same magnification and the bar in panel (D) equals 20  $\mu\text{m}$ .

### A Potential Explanation for the Diverse Morphologies of Seminiferous Tubules that Occur After GDNF Signaling is Inhibited for 2 Days

Our data demonstrate that *in vivo* even a brief inhibition of GDNF signaling results in loss of some stem spermatogonia,

for 44 days later 8.7% of the tubules are devoid of all but a few elongate spermatids. In addition, loss of stem or other undifferentiated spermatogonia results in the absence of one or two generations of spermatogenic cells from all but 26% of the other seminiferous tubules. We can conservatively estimate when this loss happens because Oakberg [26] and Clermont and Trott [27] defined the amount of time required for completion of each phase of spermatogenesis and because we have established that during 11 days of treatment with NA-PP1, 97% of stem spermatogonia are lost from testes of Ret (V805A) mice (Fig. 5 and Supporting Information Fig. S9). Thus, in tubules missing preleptotene spermatocytes, pachytene spermatocytes or round spermatids, stem, and other undifferentiated spermatogonia were lost no earlier than 26, 17, and 9.2 days, respectively, after the start of the experiment. This raises the question of why this loss occurred after treatment with NA-PP1 ceased. We propose that such losses result from the fact that undifferentiated spermatogonia move within the basal compartment of a seminiferous tubule [14, 35]. When a number of these cells are depleted, some regions of this basal compartment will be empty until they are refilled by an influx of new cells. This refilling will lead to the production of new type A<sub>1</sub> spermatogonia and then to more advanced spermatogenic cell types. At the same time, until the number of stem and other undifferentiated spermatogonia are restored by the replication of the remaining cells, this migration will deplete undifferentiated spermatogonia in another part of the tubule. As a consequence, in specific regions of a tubule, there will be temporary pauses in the production of differentiated spermatogenic cells, causing the diverse morphologies we observed 44 days after the last injection of NA-PP1. However, the movement of these cells also ensures that after a loss of some stem and other undifferentiated spermatogonia, the remaining stem cells are able to repopulate empty niches within the basal compartment and thereby rebuild the entire seminiferous epithelium and consequently male fertility.

### SUMMARY

We have described a unique chemical-genetic approach to study the consequence of the reversible inhibition of GDNF signaling to stem spermatogonia in a normal adult testis. Using this approach, we have demonstrated that inhibiting GDNF signaling causes a sequential loss by undifferentiated spermatogonia of two stem cell markers, *Gfr $\alpha$ 1* and *Zbtb16*, and a logarithmic decrease in testis Ret mRNA levels. These decreases are associated with the loss of functional stem cells. Some stem cells are lost when GDNF signaling is inhibited for only 2 days, while others persisted for up to 11 days. We hypothesize that the stem cells are most sensitive to loss of GDNF signaling when they are present at stages of maximal GDNF concentration. The different sensitivities among subpopulation of stem spermatogonia to loss of GDNF signaling can therefore be partially explained by the fact that 8.6 days are required for a segment of tubule to progress through one entire cycle. However, once GDNF signaling is reestablished, the remaining stem cells both replicate and migrate within the basal compartment of the seminiferous epithelium, thereby refilling empty niches. In conclusion, these data provide the first direct support for the hypothesis that in a normal mature testis GDNF promotes self-renewal over differentiation of replicating stem spermatogonia.

### ACKNOWLEDGMENTS

This research was supported by the Eunice Kennedy Shriver NICHD/NIH through cooperative agreement U54055740 as part of the Specialized Cooperative Centers Program in Reproduction and Infertility research. This research also was supported by the National Institute of Neurological Disorders and Stroke (K08 NS052624) and National Institute of Biomedical Imaging and Bioengineering (R01 EB001987). We thank Barry Zirkin for critiquing many versions of the manuscript and

Kyle Orwig for sharing the method for immunostaining intact seminiferous tubules for Zbtb16. We thank Dirk de Rooij for his estimates of the duration of the cell cycle of stem spermatogonia.

### DISCLOSURE OF POTENTIAL CONFLICTS OF INTEREST

The authors declare no conflicts of interest.

### REFERENCES

- de Rooij DG. Proliferation and differentiation of spermatogonial stem cells. *Reproduction* 2001;121:347–354.
- Kubota H, Avarbock M, Brinster R. Growth factors essential for self-renewal and expansion of mouse spermatogonial stem cells. *Proc Natl Acad Sci USA* 2004;101:16489–16494.
- Monesi V. Autoradiographic study of DNA synthesis and the cell cycle in spermatogonia and spermatocytes of mouse testis using tritiated thymidine. *J Cell Biol* 1962;14:1–18.
- Hu J, Shima H, Nakagawa H. Glial cell line-derived neurotrophic factor stimulates sertoli cell proliferation in the early postnatal period of rat testis development. *Endocrinology* 1999;140:3416–3421.
- Huckins C. The spermatogonial stem cell population in adult rats. II. A radioautographic analysis of their cell cycle properties. *Cell Tissue Kinet* 1971;4:313–334.
- Fabrikant JI. Cell cycle of spermatogonia in mouse testis. *Invest Radiol* 1979;14:189–191.
- Lok D, de Rooij DG. Spermatogonial multiplication in the Chinese hamster. III. Labelling indices of undifferentiated spermatogonia throughout the cycle of the seminiferous epithelium. *Cell Tissue Kinet* 1983;16:31–40.
- Lok D, Jansen MT, de Rooij DG. Spermatogonial multiplication in the Chinese hamster. II. Cell cycle properties of undifferentiated spermatogonia. *Cell Tissue Kinet* 1983;16:19–29.
- Ebata KT, Yeh JR, Zhang X et al. Soluble growth factors stimulate spermatogonial stem cell divisions that maintain a stem cell pool and produce progenitors in vitro. *Exp Cell Res* 2011;317:1319–1329.
- Wu Z, Luby-Phelps K, Bugde A et al. Capacity for stochastic self-renewal and differentiation in mammalian spermatogonial stem cells. *J Cell Biol* 2009;187:513–524.
- Meng X, Lindahl M, Hyvonen ME et al. Regulation of cell fate decision of undifferentiated spermatogonia by GDNF. *Science* 2000;287:1489–1493.
- Creemers LB, Meng X, den Ouden K et al. Transplantation of germ cells from glial cell line-derived neurotrophic factor-overexpressing mice to host testes depleted of endogenous spermatogenesis by fractionated irradiation. *Biol Reprod* 2002;66:1579–1584.
- Naughton CK, Jain S, Strickland AM et al. Glial cell-line derived neurotrophic factor-mediated RET signaling regulates spermatogonial stem cell fate. *Biol Reprod* 2006;74:314–321.
- Yoshida S, Sukeno M, Nakagawa T et al. The first round of mouse spermatogenesis is a distinctive program that lacks the self-renewing spermatogonia stage. *Development* 2006;133:1495–1505.
- Kim JS, Lilley BN, Zhang C et al. A chemical-genetic strategy reveals distinct temporal requirements for SAD-1 kinase in neuronal polarization and synapse formation. *Neural Dev* 2008;3:23.
- Chen X, Ye H, Kuruvilla R et al. A chemical-genetic approach to studying neurotrophin signaling. *Neuron* 2005;46:13–21.
- Salomon D, Bonshien A, Sessa G. A chemical-genetic approach for functional analysis of plant protein kinases. *Plant Signal Behav* 2009;4:645–647.
- Bishop AC, Buzko O, Shokat KM. Magic bullets for protein kinases. *Trends Cell Biol* 2001;11:167–172.
- Jing S, Wen D, Yu Y et al. GDNF-induced activation of the ret protein tyrosine kinase is mediated by GDNFR-alpha, a novel receptor for GDNF. *Cell* 1996;85:1113–1124.
- Bishop AC, Shokat KM. Acquisition of inhibitor-sensitive protein kinases through protein design. *Pharmacol Ther* 1999;82:337–346.
- Rossi J, Luukko K, Poteryaev D et al. Retarded growth and deficits in the enteric and parasympathetic nervous system in mice lacking GFRa2, a functional neurturin receptor. *Neuron* 1999;22:243–252.
- Nishino J, Mochida K, Ohfuji Y et al. GFRa3, a component of the artemin receptor, is required for migration and survival of the superior cervical ganglion. *Neuron* 1999;23:725–736.
- Lindfors PH, Lindahl M, Rossi J et al. Ablation of persephin receptor glial cell line-derived neurotrophic factor family receptor 4 impairs thyroid calcitonin production in young mice. *Endocrinology* 2006;147:2237–2244.
- Yoshida S, Sukeno M, Nabeshima Y. A vasculature-associated niche for undifferentiated spermatogonia in the mouse testis. *Science* 2007;317:1722–1726.
- Luo W, Wickramasinghe SR, Savitt JM et al. A hierarchical NGF signaling cascade controls Ret-dependent and Ret-independent events during development of nonpeptidergic DRG neurons. *Neuron* 2007;7:739–754.
- Oakberg EF. Duration of spermatogenesis in the mouse and timing of stages of the cycle of the seminiferous epithelium. *Am J Anat* 1956;99:507–516.
- Clermont Y, Trott M. Duration of the cycle of the seminiferous epithelium in the mouse and hamster determined by means of 3H-thymidine and radioautography. *Fertil Steril* 1969;20:805–817.
- Schuchardt A, D'Agati V, Larsson-Blomberg L et al. Defects in the kidney and enteric nervous system of mice lacking the tyrosine kinase receptor Ret. *Nature* 1994;367:380–383.
- Grisanti L, Falciatori I, Grasso M et al. Identification of spermatogonial stem cell subsets by morphological analysis and prospective isolation. *Stem Cells* 2009;27:3043–3052.
- Challen GA, Boles NC, Chambers SM et al. Distinct hematopoietic stem cell subtypes are differentially regulated by TGF-beta1. *Cell Stem Cell* 2010;6:265–278.
- Johnston DS, Wright WW, Dicaneloro P et al. Stage-specific gene expression is a fundamental characteristic of rat spermatogenic cells and Sertoli cells. *Proc Natl Acad Sci USA* 2008;105:8315–8320.
- Huckins C. The spermatogonial stem cell population in adult rats. Evidence for a long-cycling population. *Cell Tissue Kinet* 1971;4:335–349.
- Tokuda M, Kadokawa Y, Kurahashi H et al. CDH1 is a specific marker for undifferentiated spermatogonia in mouse testes. *Biol Reprod* 2007;76:130–141.
- Fuchs E. The tortoise and the hair: Slow-cycling cells in the stem cell race. *Cell* 2009;137:811–819.
- Nakagawa T, Sharma M, Nabeshima YI et al. Functional hierarchy and reversibility within the murine spermatogenic stem cell compartment. *Science* 2010;328:62–67.



See [www.StemCells.com](http://www.StemCells.com) for supporting information available online.